

IC-150

IMMEDIATE CONSUMPTION COOLER

G-SERIES

FEATURES

- **Exterior Dimensions (WDH):** 635 x 595 x 1070 mm
- **Internal Volume:** 161 L
- **Footprint:** .37 sq.m.
- Dynamic LED Lighting In Door Provides Enhanced Product Illumination While Greatly Reducing Energy Consumption
- Forced Air Refrigeration System For Fast Product Temperature Pull Down
- High Impact Side Panel Graphics
- High Density Environmentally Friendly Insulation
- Utilizes Climate-Friendly Natural Refrigerant
- 2 Adjustable Powder-Coated Metal Shelves
- Self-Closing Acrylic Lid
- Top Basket Merchandises Single Layer of Promo Product
- Double-paned, Low "E", Self-Closing Front Door
- Durable Pre-Painted Steel Cabinet and Heavy Duty Inner Liner
- Adjustable Temperature Control
- 9' Heavy Duty Power Cord



CERTIFICATIONS

220-240V/60Hz



- CE
- ROHS
- EMC

- CB Scheme
- EU Energy



The specifications contained herein are for illustrative marketing purposes only and are not intended to be relied upon in whole or in part. All creative works are the sole property of IDW, Inc. Any reproduction in part or as a whole without written permission from IDW, Inc. is prohibited.

IC-150

IMMEDIATE CONSUMPTION COOLER

TECH SPECS

Refrigerant	R600a
Amps	1.4
Volts/Hz	220-240V/50Hz
Compressor HP	1/6

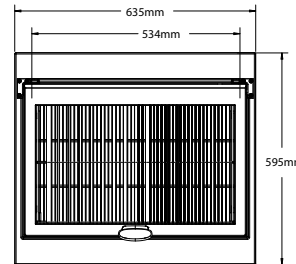
DIMENSIONS

Exterior (WDH)	635 x 595 x 1070 mm
Interior (WDH)	534 x 411 x 659 mm
Shelf (WD)	512 x 391 mm
Internal Volume	161 L


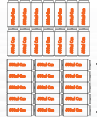




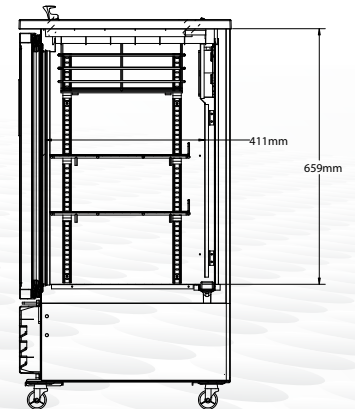
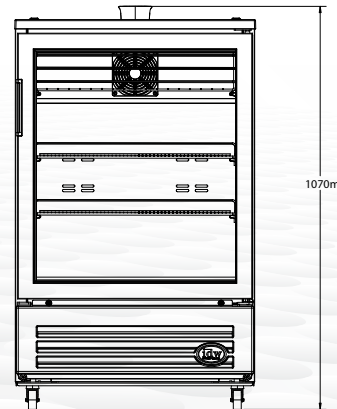
SHIPPING SPECS

Gross Weight	68 kg
Net Weight	58 kg
Carton Dims (WDH)	696 x 632 x 1110
Units per Pallet	1
Shipping Options	40'HQ ~108 53' ~ 144



PACKOUT CAPACITIES

	Facings	Deep	Total Capacity	Total Rows
	3 Shelves	8 x 5	= 160*	4
	Base	8 x 5		
	Top Basket Vertical Option	7 x 2	= 14	1
	Horizontal Option	3 x 5	= 15	1
	2 Shelves	8 x 5	= 120	3
	Base	8 x 5		
	Top Basket	7 x 1		
	1 Shelf	7 x 4	= 63**	2
	Base	7 x 4		



* Additional shelves, beyond what is supplied with the cooler, may be required to achieve this maximum pack-out.

** 20oz pack-outs may vary depending on package size. Info based on sample.



The specifications contained herein are for illustrative marketing purposes only and are not intended to be relied upon in whole or in part. All creative works are the sole property of IDW, Inc. Any reproduction in part or as a whole without written permission from IDW, Inc. is prohibited.

8825 Boston Place, Rancho Cucamonga CA 91730 877.307.2665 | Office: 909.447.8254 | Fax: 909.305.8756

Last Updated: July 29, 2024 12:55 PM