

IC-Series Cooler

Instruction Manual

IC-150/IC-150L

Models: Listed on Inside Cover

IC-150



IC-150L



IC-Series Cooler Instruction Manual

IC-150/IC-150L

Includes Models:

- IC-150
- IC-150-0-2-1-N-G-1
- IC-150-0-2-1-N-7-1
- IC-150-0-2-1-N-I-1
- IC-150-0-2-1-N-M-1
- IC-150-0-2-1-N-J-1
- IC-150-L-2-1-N-G-1
- IC-150-L-2-1-N-7-1
- IC-150-L-2-1-N-I-1
- IC-150-L-2-1-N-M-1
- IC-150-L-2-1-N-J-1
- IC-150-LB-2-1-N-G-1
- IC-150-LB-2-1-N-7-1
- IC-150-LB-2-1-N-I-1
- IC-150-LB-2-1-N-M-1
- IC-150-LB-2-1-N-J-1

Table of Contents

Parts & Identification List..... 4

Safety Instructions..... 5

Flammable Refrigerant Warnings 6

Installation..... 7

 Ambient Environment..... 7

 Preparation Prior to Operation 7

 Electrical Requirements 7

Maintenance 8

 Condenser 8

 Cleaning..... 8

 Accessing Cooler Components..... 9

 Moving Cooler 9

 Drip Pan 9

Specifications 10

Troubleshooting..... 11

Circuit Diagrams 12

Model Numbering Schematic:



For Future Reference

- This easy-to-use manual will guide you in getting the best use of your Cooler.
- Remember to record the model number and the serial number. This information can be found on the inside of your Cooler.
- Keep your receipt with this manual for future warranty service.

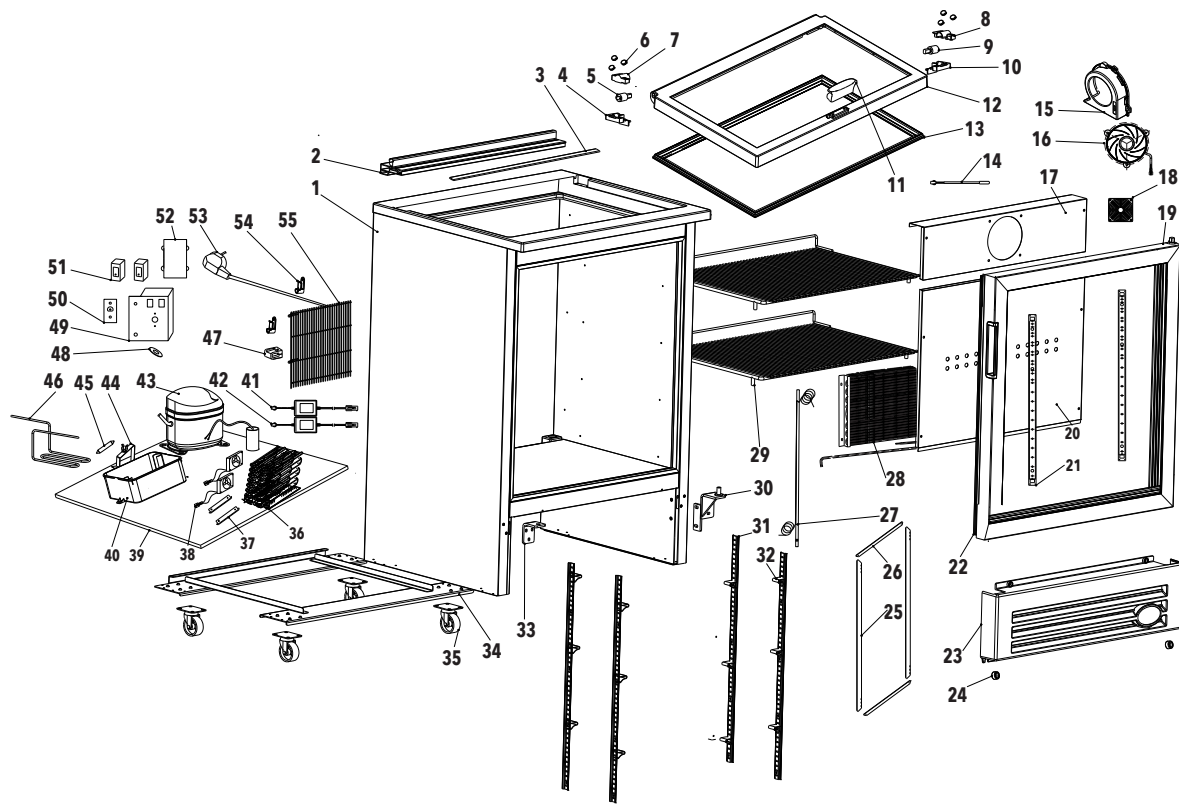
Model #: _____

Serial #: _____

Date of Purchase: _____



PARTS & IDENTIFICATION



- | | | |
|---------------------------------|-------------------------------------|------------------------------|
| 1. Cabinet | 20. Evaporator Baffle | 39. Compressor Base Plate |
| 2. Mullion | 21. Door Side LED Light (2) | 40. Drip Pan |
| 3. Mullion Rib | 22. Front Door Gasket | 41. Switch 1 |
| 4. Damper Base (Left) | 23. Front Grill | 42. Switch 2 |
| 5. Damper (Left) | 24. Front Grill Bracket (2) | 43. Compressor |
| 6. Hinge Cover Blanking Cap (6) | 25. Side Lamp Cover (2) | 44. Filter Bracket |
| 7. Damping Box Left | 26. Black Lamp Cover (2) | 45. Filter |
| 8. Damping Box Right | 27. Suction Tube Part and Capillary | 46. Connection Pipe |
| 9. Damper (Right) | 28. Evaporator | 47. Power Cord Clip |
| 10. Damping Base (Right) | 29. Shelf (2) | 48. Thermostat Label |
| 11. Handle | 30. Bottom Hinge | 49. Thermostat Box |
| 12. Top Door Frame | 31. Pilaster (4) | 50. Thermostat Control Panel |
| 13. Top Door Gasket | 32. Shelf Clips (12) | 51. Light Switch (2) |
| 14. Thermostat | 33. Middle Hinge | 52. Thermostat Box Cover |
| 15. Evaporator Fan Cover | 34. Base Bracket | 53. Power Cord |
| 16. Evaporator Fan | 35. Caster (2) w/ Brake (2) | 54. Power Cord Holder (2) |
| 17. Fan Baffle | 36. Condenser | 55. Rear Grill |
| 18. Evaporator Fan Shroud | 37. Condenser Fan Bracket (2) | |
| 19. Front Glass Door | 38. Condenser Fan (2) | |

SAFETY INSTRUCTIONS

- When using this appliance, always follow the basic safety precautions:
- Read the entire User's Manual before operating this appliance.
- Use this appliance only for its intended purpose as described in this User's Manual.
- This cooler must be properly installed in accordance with the installation instructions before being used. See grounding instructions.
- IDW requires that a dedicated circuit be used for the unit. Failure to do so voids warranty.
- Never unplug your cooler by pulling on the power cord. Always grasp the plug firmly and pull it straight out from the outlet.
- Unplug your cooler before cleaning or making any repairs.
Note: If for any reason this product requires service, we strongly recommend that a certified technician perform the service.
- When disconnecting the power source, wait at least 5 minutes to reconnect the power to avoid damage to the compressor and the cooling system.
- Immediately repair or replace all electrical cords that have become frayed or otherwise damaged. Do not use a cord that shows cracks or abrasion damage along its length, the plug or the connector end.
- Do not operate or store your cooler near or around explosive fumes, gasoline or other flammable vapors and liquids.
- Do not use flammable liquids to clean unit.
- Setting the temperature control to the 0 position does not remove power to the light circuit, perimeter heaters, or evaporator fans.
- Do not adjust the temperature control. The temperature control is factory set between levels 4 and 5 for maximum performance.
- To avoid damage to the casters, do not transport the cooler on rough surfaces.

PLEASE SAVE THESE INSTRUCTIONS!

DANGER!

PROPER DISPOSAL OF THE REFRIGERATOR

Pre-Caution, Non-Operating Coolers Should Have:

- Lid removed.
- Baskets kept in place in order to prevent any small child from climbing inside cooler.

For Proper Disposal of Cooler:
Distributors/retailers need to contact a qualified service technician:

- To recover all refrigerant from the cooler
- To remove the compressor or remove the oil from the compressor

Then the distributor/retailer can contact their local metal recycling center to pick up the remaining cabinet, shelves, etc. By law, disposal of hazardous wastes may be subject to fines and imprisonment under the provisions of the environmental regulations.



FLAMMABLE REFRIGERANT WARNING

- Special Note:** The Cooler is not to be used by persons (including children) with reduced physical, sensory or mental capabilities, or lack of experience and knowledge, unless they have been given supervision or instruction. Children being supervised not to play with the Cooler.
1. During user repair details concerning precautions during user maintenance (instructions shall include information pertaining to the handling, servicing and disposal).
 2. Do not store explosive substances such as aerosol cans with a flammable propellant inside the Cooler.
 3. **WARNING** - Keep clear of obstruction all ventilation openings in the Cooler enclosure or in the structure for building-in.
 4. **WARNING** - Do not use mechanical devices or other means to accelerate the defrosting process, other than those recommended by the manufacturer.
 5. **WARNING** - Do not damage the refrigerant circuit.
 6. **WARNING** - Do not use electrical Coolers inside the storage compartments of the Cooler, unless they are of the type recommended by the manufacturer.
 7. This Cooler uses flammable insulation blowing gas, please dispose of the Cooler according to the local regulation
 8. Climate Class: 4 (temperature 30°C (86°F), Humidity 55%).
 9. If the supply cord is damaged, it must be replaced by the manufacturer or its service agent or a similarly qualified person in order to avoid a hazard.
 10. Caution: Risk of fire / flammable materials.



11. Correct Disposal of this product	
	<p>Help protect the environment and human health. Put the packaging in applicable containers to recycle it. Help to recycle waste of electrical and electronic Coolers. Do not dispose of Coolers marked with this symbol with the household waste. Return the product to your local recycling facility or contact your municipal office.</p>

12. Place cooler on a stable, flat, dry surface.
13. Cooler should not be placed in any area or surface that may cause it to tip, fall or overturn.
14. This appliance uses flammable refrigerant and blowing gas. Please install, handle and service this appliance strictly according to these instructions.
15. Original replacement parts are to be used for repair of unit.
16. When transporting or moving cooler, ensure it remains stable and upright. Tie down cooler securely when transporting in a vehicle.

INSTALLATION

Installation of the Cooler must be done according to applicable local codes or equivalent.

Ambient Environment

- Place Cooler on an even surface to reduce vibration and noise.
- To transport, do not tilt the Cooler beyond a 45 degree angle.
- Do not place Cooler in direct sunlight or near any heat sources.
- Do not place Cooler in environment temperatures that exceed 109°F.
- Do not place Cooler in below normal temperatures.
- Do not place Cooler in extreme humid environments, this may cause components to rust.
- Do not place Cooler near constant running or splattering water, this may cause immediate damage to refrigeration system.
- Must allow at least 4" between rear of Cooler and wall for proper ventilation and heat dissipation of Cooler.
- Do not place furniture or other articles with sharp edges near the Cooler in order to prevent damage to the glass door.
- This Cooler is for indoor use only.
- Place Cooler in it's final location, making certain there is adequate ventilation in the room.

WARNING: Warranty is void if ventilation is insufficient.

Preparation Prior to Operation

- Remove all packaging materials before using Cooler. This includes: foam pedestal, adhesive tape (used to fix accessories) and protective gaskets.
- Inspect Cooler for concealed damage. Immediately file a claim with the freight carrier if there is damage. IDW is not responsible for damage incurred during shipping.
- Cooler must remain unplugged in an upright position for 1 hour prior to use.
- Clean the interior surface with a soft cloth and lukewarm water before operation.
- Ensure that drain hose or hoses are positioned in the pan.
- Remove plug and cord from inside the lower rear of the Cooler.
- The Cooler should be placed close enough to the electrical supply so that extension cords are not used.

Electrical Requirements

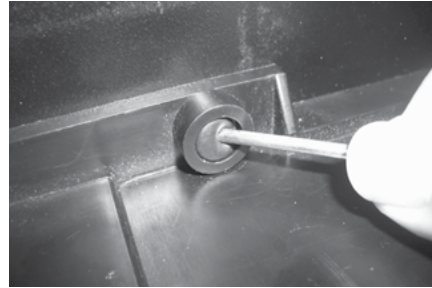
- This model operates with a 220-240V/50Hz power supply. Check the electrical outlet for proper voltage.
 - Dedicate one outlet for the use of the Cooler.
 - Do not use an extension cord or any other multiple connectors as this can lead to compressor failure.
 - If the cord is damaged, it must be replaced.
 - For your safety, plug the unit into a grounded wall outlet. Please check with a certified electrician for details.
- WARNING:** Do not use extension cords.
WARNING: Compressor warranties are void if compressor burns out due to low voltage.
WARNING: Power cord ground pin must NOT be removed!



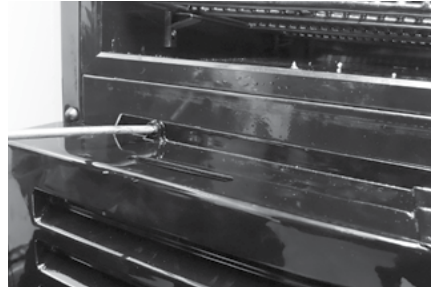
MAINTENANCE

Condenser

It is essential to keep the condenser coils clean and free of dust and debris at all times. Periodically clean the condenser coils with a soft bristle brush or vacuum-cleaner to properly maintain the refrigeration system. Failure to clean the condenser at regular intervals may cause failure of the refrigeration system and could void the warranty. Prior to any maintenance, be sure to unplug the Cooler.



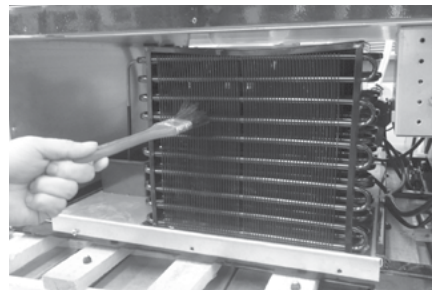
1 Remove the rubber cap from the front grill.



2 Use a Phillips head screwdriver and remove the screws as shown.



3 The front grill can now be removed by pulling it up.



4 Using plastic bristle brush, carefully clean the condenser being aware that coils can bend or be damaged if too much force is used.

5 Replace grill and use the Phillips screwdriver to tighten the screws into place, replace the rubber caps.

Cleaning

- Unplug the Cooler before cleaning.
- Use a soft cloth or sponge with soap and water (non-corrosive mild detergent), while cleaning. After cleaning, wipe the Cooler using a dry cloth to prevent the Cooler from rusting.
- Do not spray water on the Cooler, and do not use hard or steel brushes to clean the Cooler.
- Do not use organic solvents, boiling water, scrubbing powders or acids while cleaning.
- A drain or waste outlet **may** be provided for draining of a display Cooler. **If** a display Cooler drain is provided for flushing, it will have a minimum internal diameter of 1" (25mm)

If the Cooler will be in a non-operational state for a long period of time, clean as instructed above, and keep the door open until interior is dry.



MAINTENANCE Accessing Cooler Components:

*** A CERTIFIED TECHNICIAN IS REQUIRED TO REPAIR ALL REFRIGERATION COMPONENTS FOR WARRANTY PURPOSES.**

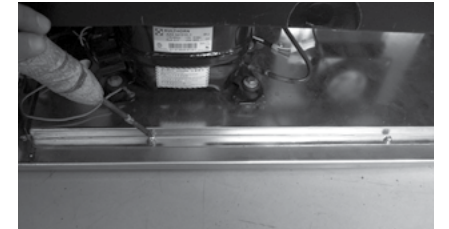
For convenient repair, the refrigeration components (compressor, evaporator, condenser, evaporation fan, condensation fan and filter) are designed using a split system; any component can be easily replaced. Replacement procedure is as follows:



1. Using a Phillips screwdriver, remove the (4) screws from the back grill as shown.



2. The back metal grill can now be removed.



3. Remove the (2) screws in the front.



4. Pull the drawer forward to access the system.



5. To re-assemble the cooler reverse steps 1-5.

Moving the Cooler

1. Remove all product from the unit.
2. Secure all loose parts inside the cooler.
3. Tape the door shut.
4. Be sure to ship the cooler in an upright position.

Drip Pan

1. During normal compressor cycle, water will drain into the drip pan and evaporate.



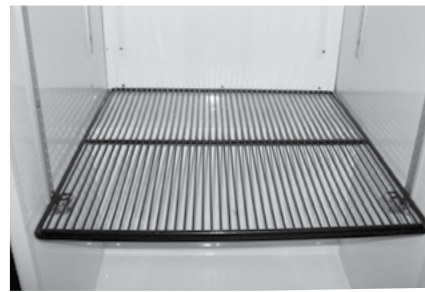
SHELVING INSTALLATION



Shelves are secured in place with zip ties. Cut zip ties to adjust shelves as desired.



Securely insert shelf clips into pilasters.



Shelf clips should be level so shelf lays flat.

(Maximum load per shelf is 105lbs/48 kg)

Display refrigerators can be loaded within the shelf dimensions from the front to back side. They can also be loaded in any space from the bottom to the top interior cabinet. Do not allow product to block the evaporator fan cover because the evaporator fan helps the cooler to ventilate properly.

SPECIFICATIONS

MODEL	VOLUME(L)	RATED VOLTAGE	CLIMATE CLASS	RATED CURRENT	REFRIGERANT
IC-150-021NG-1 IC-150-021N7-1 IC-150-021NI-1 IC-150-021NM-1 IC-150-021NJ-1 IC-150-LB21NG-1 IC-150-LB21N7-1 IC-150-LB21NI-1 IC-150-LB21NM-1 IC-150-LB21NJ-1 IC-150-L21NG-1 IC-150-L21N7-1 IC-150-L21NI-1 IC-150-L21NM-1 IC-150-L21NJ-1	161 L	220-240V/50Hz	4	1.4A	R600a/50g

TROUBLESHOOTING

The following are NOT malfunctions:

Situation	Causes
Liquid flowing noise within Cooler	<ul style="list-style-type: none"> This is the sound of the cooling agent flowing through the pipes.
Refrigeration system is shutdown for longer periods of time while temperature inside is still very low	<ul style="list-style-type: none"> This Cooler is well insulated and can maintain a relatively ambient temperature.
Condensation on door/lid	<ul style="list-style-type: none"> This may be due to a high indoor humidity or the Cooler's temperature is set too low. Wipe the door dry with a towel.

- 1 This Cooler has been designed and manufactured according to National standards. If there are any questions during use, refer to this instruction manual to help troubleshoot problems.
- 2 When disposing of the Cooler, please remove the door/lid and lock assembly to avoid children accidentally becoming trapped inside the Cooler.

Prior to calling service, check the following:

Issues	Solutions
Cooler behaving abnormally or no longer cooling	Unplug the Cooler from the outlet and contact a trained service technician for repair: <ul style="list-style-type: none"> Abnormal behavior includes Cooler tripping the circuit breakers or blown fuse. Cooler not cooling to the set temperature as it should. If you can detect a chard smoky burning plastic rubber type of a smell. A noticeable increase in product temperature.
Cooler is not working properly	Please check power supply: <ul style="list-style-type: none"> Check the electrical outlet for power, and that the plug is properly inserted. Check to see if the circuit breaker is tripped or the fuse is blown. Check if the condenser is free of dirt and debris. Check for low voltage
Cooler is not keeping product cool	<ul style="list-style-type: none"> Provide ample space between all products to ensure proper circulation of air. Keep Cooler away from direct sunlight or other heating source. Keep the door closed as often as possible. Be certain the Cooler is not touching external objects or walls.
Excessive noise	<ul style="list-style-type: none"> Be certain the Cooler is placed on a level surface. Be certain the Cooler is not touching external objects or walls.
Compressor turns on and off frequently	<ul style="list-style-type: none"> The room temperature is higher than normal. The door is not closed completely. The door gasket is not sealed properly. There is insufficient clearance around the Cooler. The thermostat is not set properly. The frequency of cycling will be reduced when all of the product reaches the set temperature.

AFTER SALES SERVICE

Any product has the possibility of malfunction. Please observe the Cooler's operation and any changes to product being stored. If there are any abnormal cases, refer to the table below. If there is still no change after following the below instructions, please inform our service center in a timely manner to avoid a further loss of the Cooler.

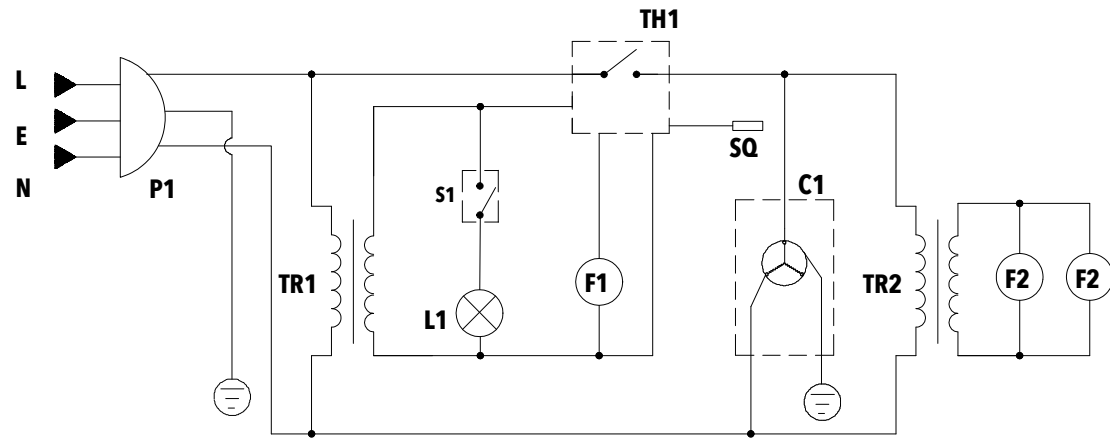
Information to provide to your qualified service professional:

- Serial number from the interior wall of the Cooler
- Coolers' installation address and contact information
- Installation location hours of operation
- Nature of problem
- Any reports of power interruptions
- Recent service or maintenance completed on the Cooler
- Has the Cooler been relocated from original installation location
- Clear access to the Cooler
- Coolers' instruction manual



CIRCUIT DIAGRAM

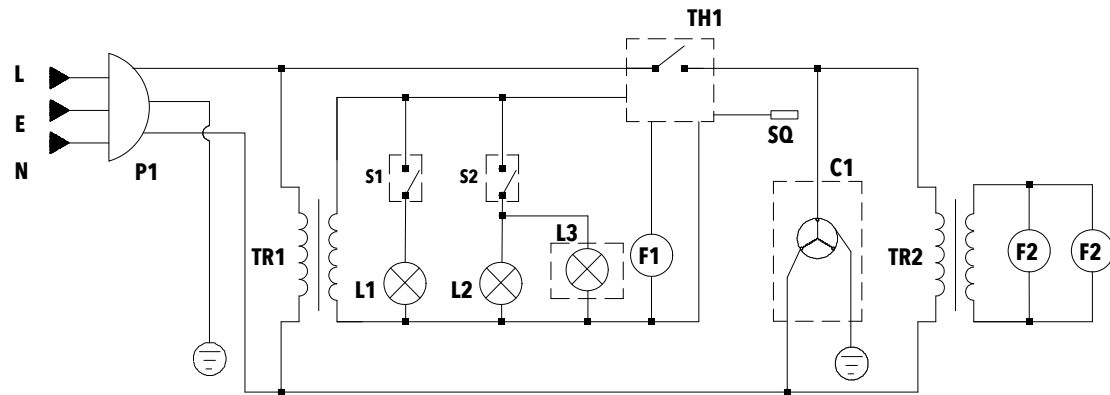
Model: IC-150-021NG-1, IC-150-021N7-1, IC-150-021NI-1, IC-150-021NM-1, IC-150-021NJ-1



- | | | | |
|-----------------|------------------------------|-----------|--------------------------|
| P1 | POWER PLUG | SQ | TEMPERATURE PROBE |
| TH1 | THERMOSTAT | S1 | LIGHT SWITCH |
| TR1, TR2 | POWER ADAPTOR | F1 | EVAPORATOR FAN |
| L1 | FRONT DOOR SIDE LIGHT | F2 | CONDENSER FAN |
| C1 | COMPRESSOR | | |

CIRCUIT DIAGRAM

Model: IC-150-LB21NG-1, IC-150-LB21N7-1, IC-150-LB21NI-1, IC-150-LB21NM-1, IC-150-LB21NJ-1, IC-150-L21NG-1, IC-150-L21N7-1, IC-150-L21NI-1, IC-150-L21NM-1, IC-150-L21NJ-1



- | | | | |
|-----------------|------------------------------------|-----------|----------------------------------|
| P1 | POWER PLUG | SQ | TEMPERATURE PROBE |
| TH1 | THERMOSTAT | S1 | SWITCH OF DOOR SIDE LIGHT |
| TR1, TR2 | POWER ADAPTOR | S2 | SWITCH OF LOGO LIGHT |
| L1 | FRONT DOOR SIDE LIGHT | F1 | EVAPORATOR FAN |
| L2 | FRONT DOOR LOGO LIGHT | F2 | CONDENSER FAN |
| L3 | TOP LID LOGO LIGHT (OPTION) | C1 | COMPRESSOR |





Innovative DisplayWorks, Inc.
8825 Boston Place, Rancho Cucamonga CA 91730