

Caster Kit

- * The nut attachment (1/2-13 UNC) and surrounding base area of cooler that holds the caster shank can become loose and deform under load or over time and repeated movement of cooler.
- ▶ Use of supporting washers along with top nut on caster shank function to better support caster and distribute loads more evenly onto base of cooler.

Regarding Models: G-9si

Serial # Range: G-9si 202104290059 - 202112999999

Item # CAK-103

Description: G-9si CASTER KIT

Kit #	Item	Name	Part #	Qty
1	1	Caster Base Support Washer	I23601	4
	2	Upper Support Washer-LH	I23604	1
	3	Upper Support Washer-RH	I23606	1
	4	Shim	I23605	2
	5	Lock Washer	91113A033	2
	6	1/2-13 UNC Hex Nut	95462A033	2
	7	Casters (Not Shown)	35309256201501	4

*Casters with brake are typically positioned on the front (door) side of cooler.



Tool / Supplies Needed for Installation:

- ✓ IDW G-9si Caster Kit
- ✓ 1-13/16" / 46mm Low-Profile (Thin) Open-end Wrench, Pliers or Similar
- ✓ Torque Wrench with 3/4" Socket
- ✓ Tools Needed - Phillips Screwdriver

Caster Kit

1. Caster Installation Prep

✓ *Tools Needed - Phillips Screwdriver*

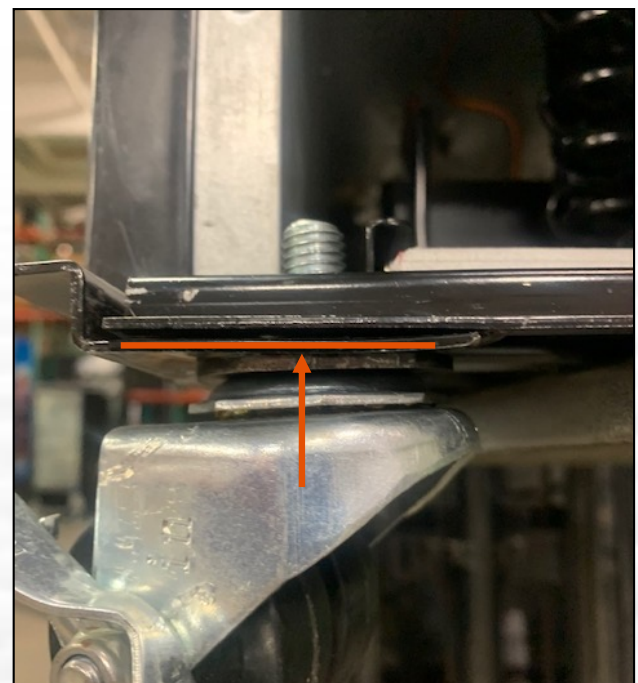
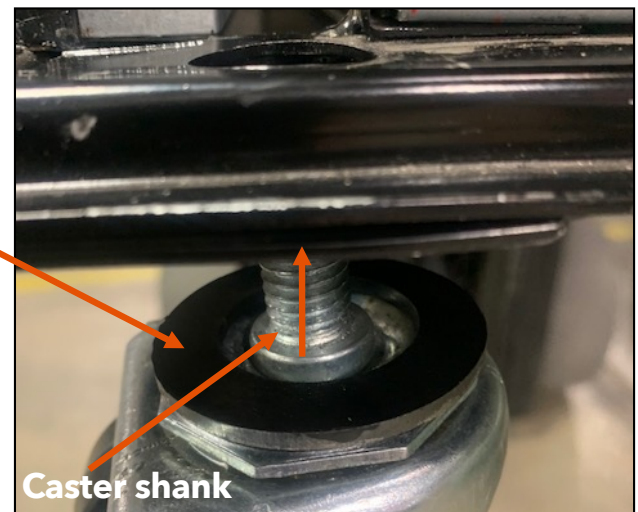
- Empty cooler and position so that the base is fully accessible from underneath.
- Remove grill by removing 2 screws shown at right.
- Remove all leveling legs by unscrewing shank and set aside. If there is a rubber sleeve covering shank of leg, remove this sleeve before unscrewing leg.



2. Installing Support Washer & Caster

✓ *1-13/16" / 46mm Low-Profile (Thin) Open-end Wrench, Pliers or Similar*

- Place base support washer around caster shank. Start thread of caster shank into cabinet base from below.
- Hold washer concentric (centered) around shank as caster continues to be tightened into base as shown on right.
- Tighten caster onto base so that washer is fully seated against base as shown at right. Using a low-profile wrench or pliers, grip and rotate hex profile on caster so that washer comes into firm contact with bottom face of cooler base.
- Ensure washer has remained centered around shank and is in firm contact with base. If washer has moved out of position, back off caster, re-center washer around shank, and re-tighten caster per step 'c' above.
- Repeat steps 'c' and 'f' for all four corners of cooler



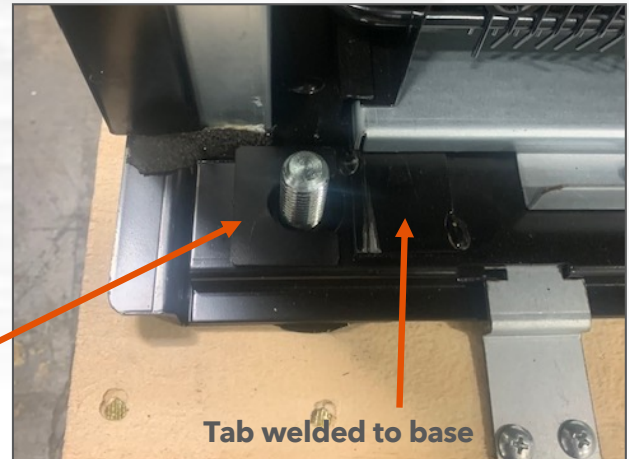
Caster Kit

3. Front Caster Shim

✓ **NO Tools Needed**

- a) For the two front casters, place shim oriented with notch for caster shank toward the interior side of base. Shim is placed on opposite side of shank from where a tab is welded to base as shown at left. Shim should lay flat and square against base.

Shim



4. Front Caster Support & Lock Washer

✓ **NO Tools Needed**

- a) Place upper support washer over shim and caster shank. Please lock washer over shank on top of support washer.

Lock washer



5. Front Caster UNC Nut

✓ **Torque Wrench with 3/4" Socket**

- a) Engage 1/2-13 UNC nut on threaded shank and snug down onto support washer. Using torque wrench with 3/4" socket, torque to 20 ft-lbs. (RH caster shown.)

Note: Ensure caster shank does not back out while tightening top nut. Use low profile wrench or pliers to hold caster hex while tightening top nut as specified.

- b) Repeat step 'a' for left front caster



idw



Customer Service

877.307.COOL(2665)
orders@idw-usa.com



Parts Ordering

877.307.COOL(2665)
orderdesk@idw-usa.com



Service Department

877.307.COOL(2665)
service@idw-usa.com

Caster Kit

- 6. Complete Installation**
- ✓ **Tools Needed - Phillips Screwdriver**
 - a) Replace grill by aligning tabs on bottom of grill with slots on base. Reinstall the 2 screws removed in step '1b'



Customer Service
877.307.COOL(2665)
orders@idw-usa.com



Parts Ordering
877.307.COOL(2665)
orderdesk@idw-usa.com



Service Department
877.307.COOL(2665)
service@idw-usa.com