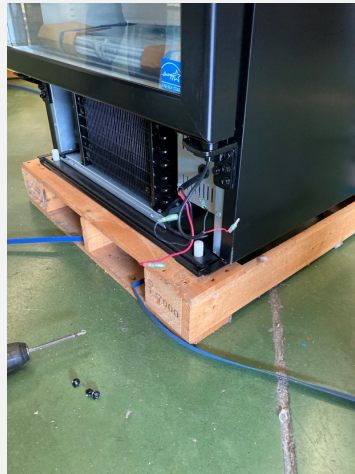


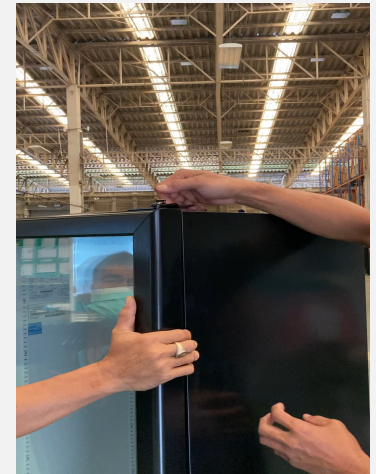
G-12si Door Reversibility Guideline



Disconnect door lighting connection



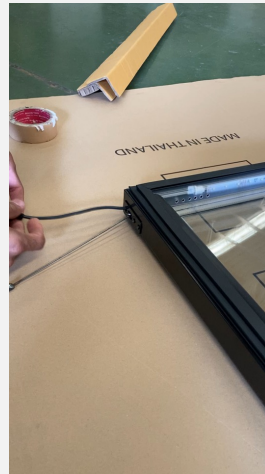
Remove upper door hinge cap and loosen its screws



Loosen the door spring by turning counterclockwise (video)

G-12si Door Reversibility Guideline

Upper Door end



Lower end

Remove the door and place on a flat surface

Hooking wire

Pullout the door spring from the bottom-end using the hook wire

Video

Video

G-12si Door Reversibility Guideline

Bottom

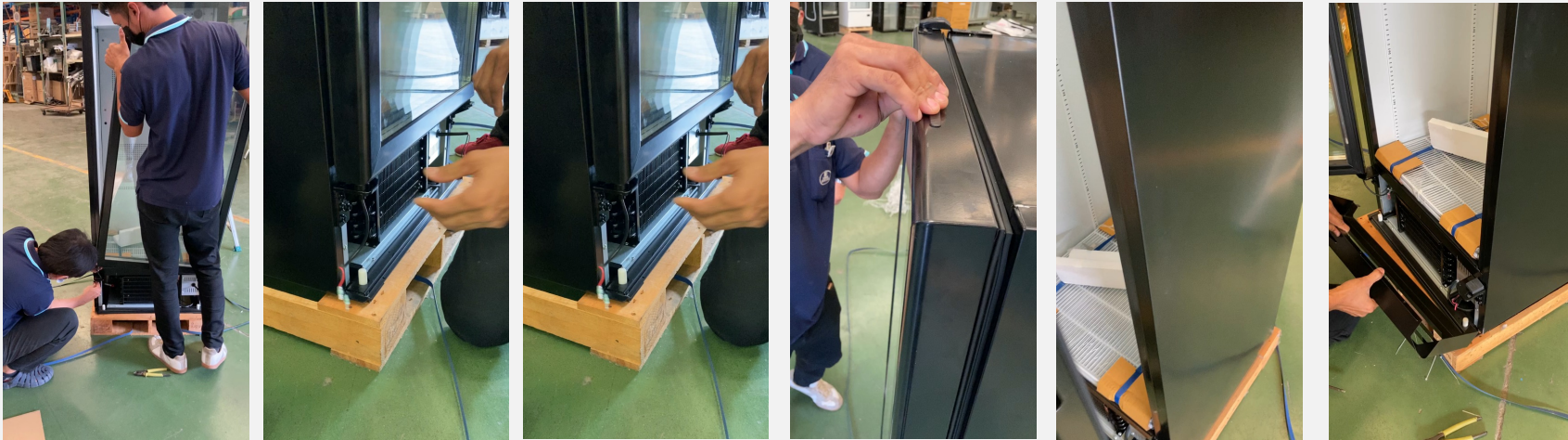


Attaching the wire connector to the wire tension spring (videos).

Pulling out the tension wire from the upper hinge (videos).

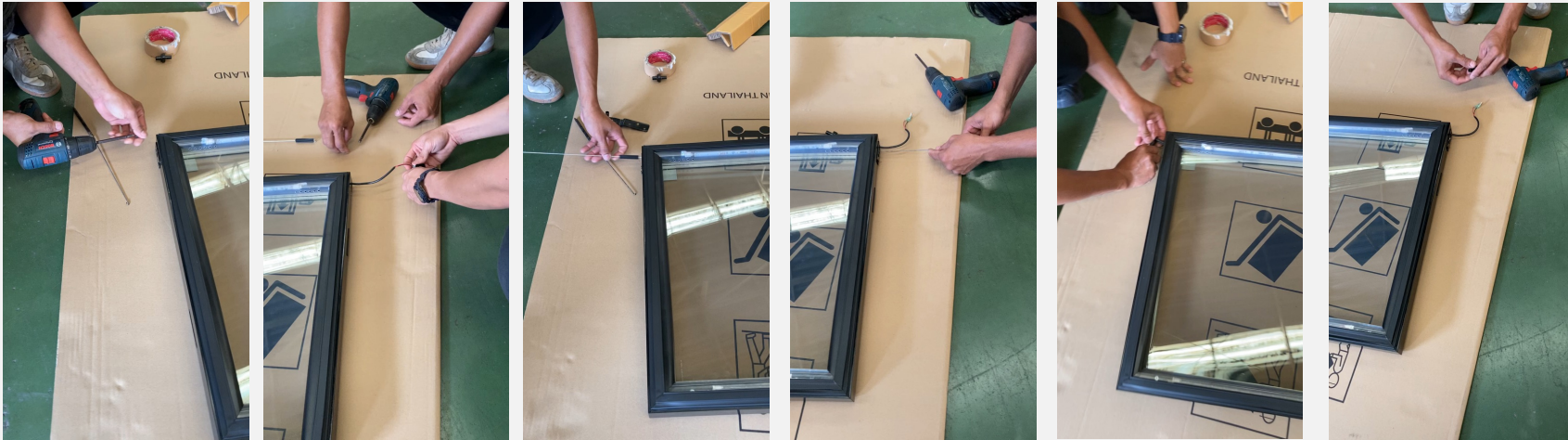
Top

G-12si Door Reversibility Guideline



Reinstalling the door to the bottom left hinge (videos).

G-12si Door Reversibility Guideline



Reinserting the tension wire from the opposite end (videos).