

# G-80

## ELECTRIC IMPULSE COOLER

## G-SERIES

### FEATURES

- **Exterior Dimensions (DH):** 18" x 42.25"
- **Internal Volume:** 2.62 cu.ft.
- **Footprint:** 2.25 sq.ft.
- **Mobile Impulse Cooler Generates Incremental Sales in High Traffic Retail Locations**
- 360° Shoppability
- 2 Interior Baskets Stack To Ensure Coldest Product is Merchandised At Top. This Allows Additional Product To Be Pulling Down To Temperature Below
- Efficient Refrigeration System For Fast Product Temperature Pull Down
- High Impact Billboard Graphics Are Interchangeable With No Tools Required
- High Density Environmentally Friendly Insulation
- Climate-Friendly Natural Refrigerant
- Heavy Duty Locking Casters
- Adjustable Temperature Control
- Split Acrylic Lid
- 9' Heavy-Duty Power Cord



### CERTIFICATIONS

**110-120V/60Hz**



- UL471
- NSF/ANSI-7: Beverage Cooler



The specifications contained herein are for illustrative marketing purposes only and are not intended to be relied upon in whole or in part. All creative works are the sole property of IDW, Inc. Any reproduction in part or as a whole without written permission from IDW, Inc. is prohibited.

# G-80

## TECH SPECS

Refrigerant	R600a
Amps	1.4
Volts/Hz	110-120V/60Hz
Compressor HP	1/8




## DIMENSIONS

Exterior (DH)	18" x 42.25"
Basket (DH)	14.5" x 12.125"
Internal Volume	13.4 ft <sup>3</sup>

## SHIPPING SPECS

Gross Weight	70 lbs
Net Weight	353 lbs
Carton Dims (WDH)	18.75" x 18.75" x 44"
Units per Pallet	12
Shipping Options (Floor Loaded)	20' ~120 40'HQ ~240 53' ~312

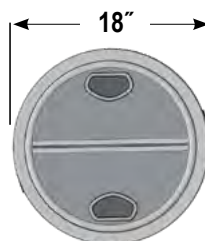
## PACKOUT CAPACITIES

	Top Basket	Bottom Basket	Total Capacity
	40	40	= 80
	30	30	= 60
	19	19	= 38**

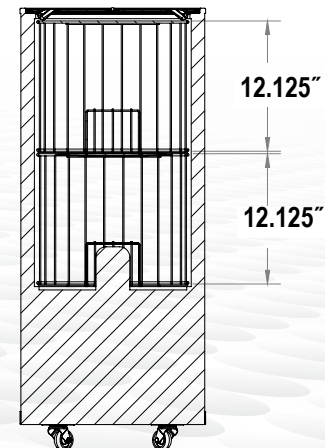
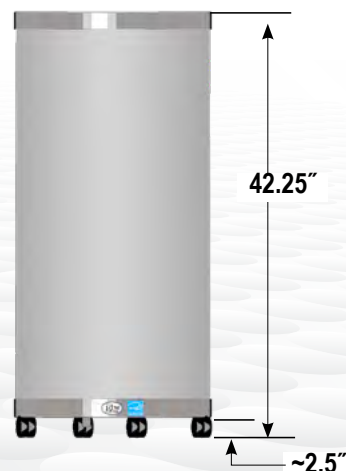
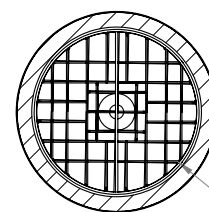
\* Additional shelves, beyond what is supplied with the cooler, may be required to achieve this maximum pack-out.  
 \*\* 20oz pack-outs may vary depending on package size.



EXTERIOR DIMENSIONS



BASKET DIMENSIONS



The specifications contained herein are for illustrative marketing purposes only and are not intended to be relied upon in whole or in part. All creative works are the sole property of IDW, Inc. Any reproduction in part or as a whole without written permission from IDW, Inc. is prohibited.

8825 Boston Place, Rancho Cucamonga CA 91730 Toll: 877.307.2665 | Office: 909.447.8254 | Fax: 909.305.8756

Last Updated: August 19, 2021 1:54 PM