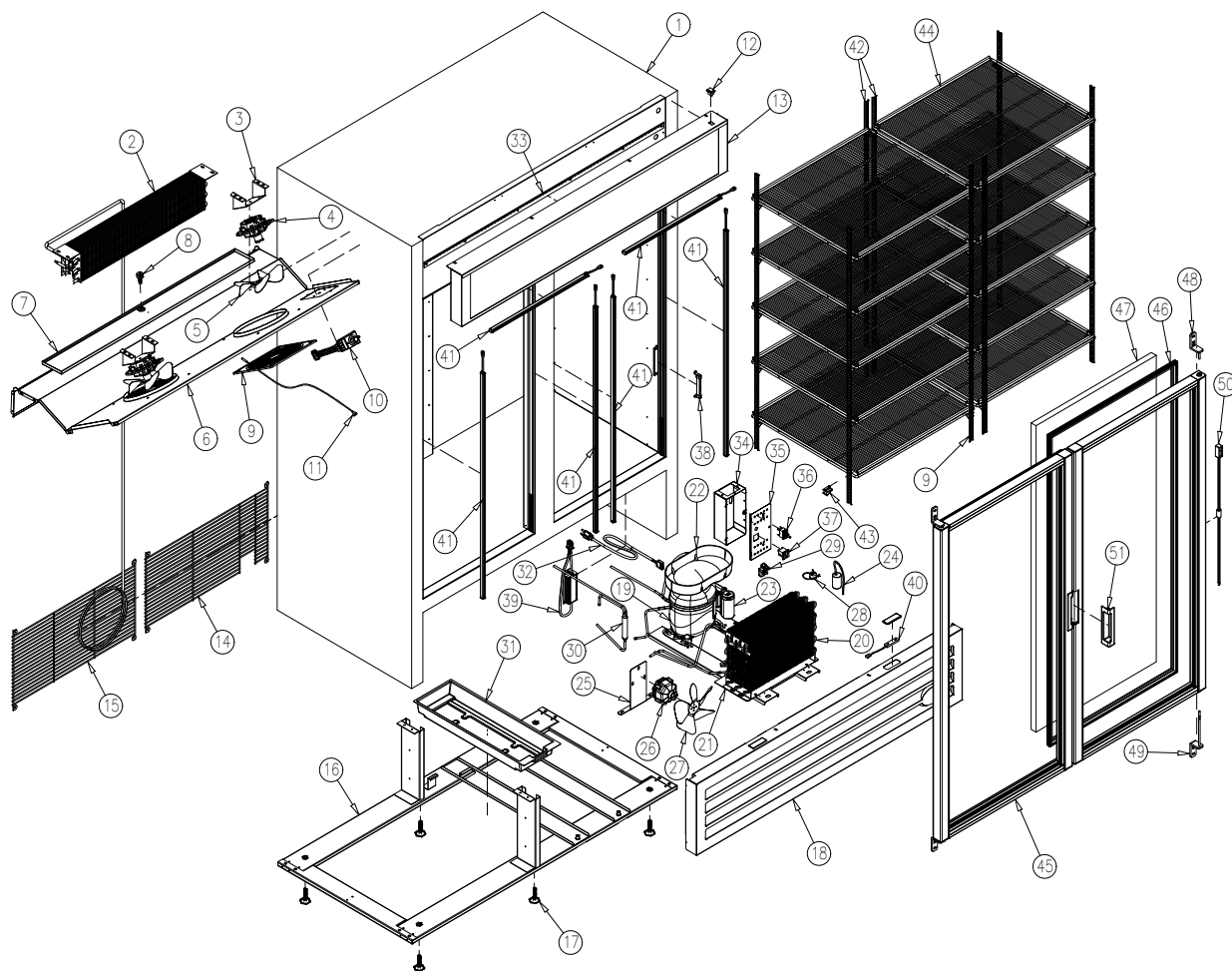


PARTS & IDENTIFICATION



- | | | | |
|-----------------------------|-------------------------|------------------------------|---------------------------|
| 1. Cabinet | 14. Left Back Grill | 27. Condenser Fan Blade | 40. Magnetic Switch (2) |
| 2. Evaporator | 15. Right Back Grill | 28. Overload Protector | 41. LED Lamp Strip (6) |
| 3. Fan Motor Bracket (2) | 16. Base Assembly | 29. Relay | 42. Pilaster (8) |
| 4. Evaporator Fan Motor (2) | 17. Leveling Legs (6) | 30. Drier | 43. Shelf Clips (40) |
| 5. Evaporator Fan Blade (2) | 18. Front Grill | 31. Evaporator Pan | 44. Flat Shelf (10) |
| 6. Baffle | 19. Compressor | 32. Power Cord | 45. Door (2) |
| 7. Evaporator Pan | 20. Condenser | 33. High Intensity LED Strip | 46. Magnetic Gasket (2) |
| 8. Plastic Drain | 21. Condenser Base | 34. Electrical Box | 47. Glass Pane (2) |
| 9. Fan Guard (2) | 22. Compressor Tray | 35. Electrical Box Cover | 48. Upper Hinge (2) |
| 10. Electronic Thermostat | 23. Start Capacitor | 36. On/Off Switch | 49. Lower Hinge (2) |
| 11. Ambient Sensor | 24. Run Capacitor | 37. Receptacle | 50. Torsion Mechanism (2) |
| 12. Light Switch | 25. Fan Motor Bracket | 38. Thermometer | 51. Door Handle (2) |
| 13. Canopy | 26. Condenser Fan Motor | 39. LED Power Supply | |