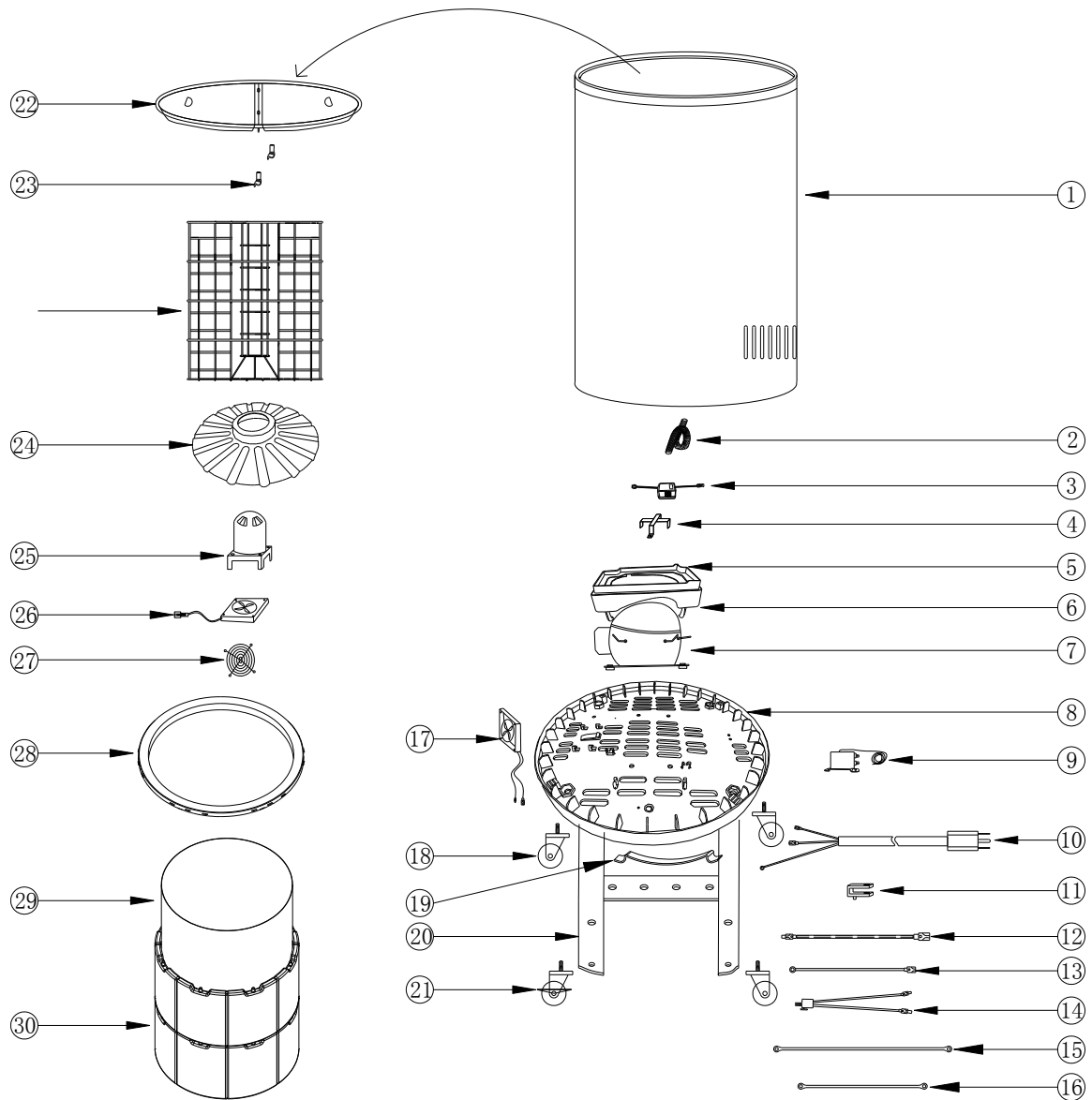


## PARTS & IDENTIFICATION



- |                    |                                 |                       |                          |
|--------------------|---------------------------------|-----------------------|--------------------------|
| 1. Cooler Cabinet  | 9. Thermostat                   | 17. Condenser Fan     | 25. Evaporator Baffle    |
| 2. Outlet Pipe     | 10. Power Cord                  | 18. Caster (3)        | 26. Evaporator Fan Cover |
| 3. Transformer     | 11. Power Cord Clip             | 19. Power Cord Holder | 27. Evaporator Fan       |
| 4. Transformer Box | 12. Thermostat Wire             | 20. Base Supporter    | 28. Evaporator Fan Grill |
| 5. Drip Pan Cover  | 13. Compressor Connecting Line  | 21. Cater with Lock   | 29. Rim                  |
| 6. Drip Pan        | 14. Transformer Connecting Line | 22. Lid (2)           | 30. Coolant Box Inner    |
| 7. Compressor      | 15. Ground Line                 | 23. Lid Clip (2)      | 31. Coolant Box (16)     |
| 8. Bottom Plate    | 16. Fan Ground Line             | 24. Basket            |                          |