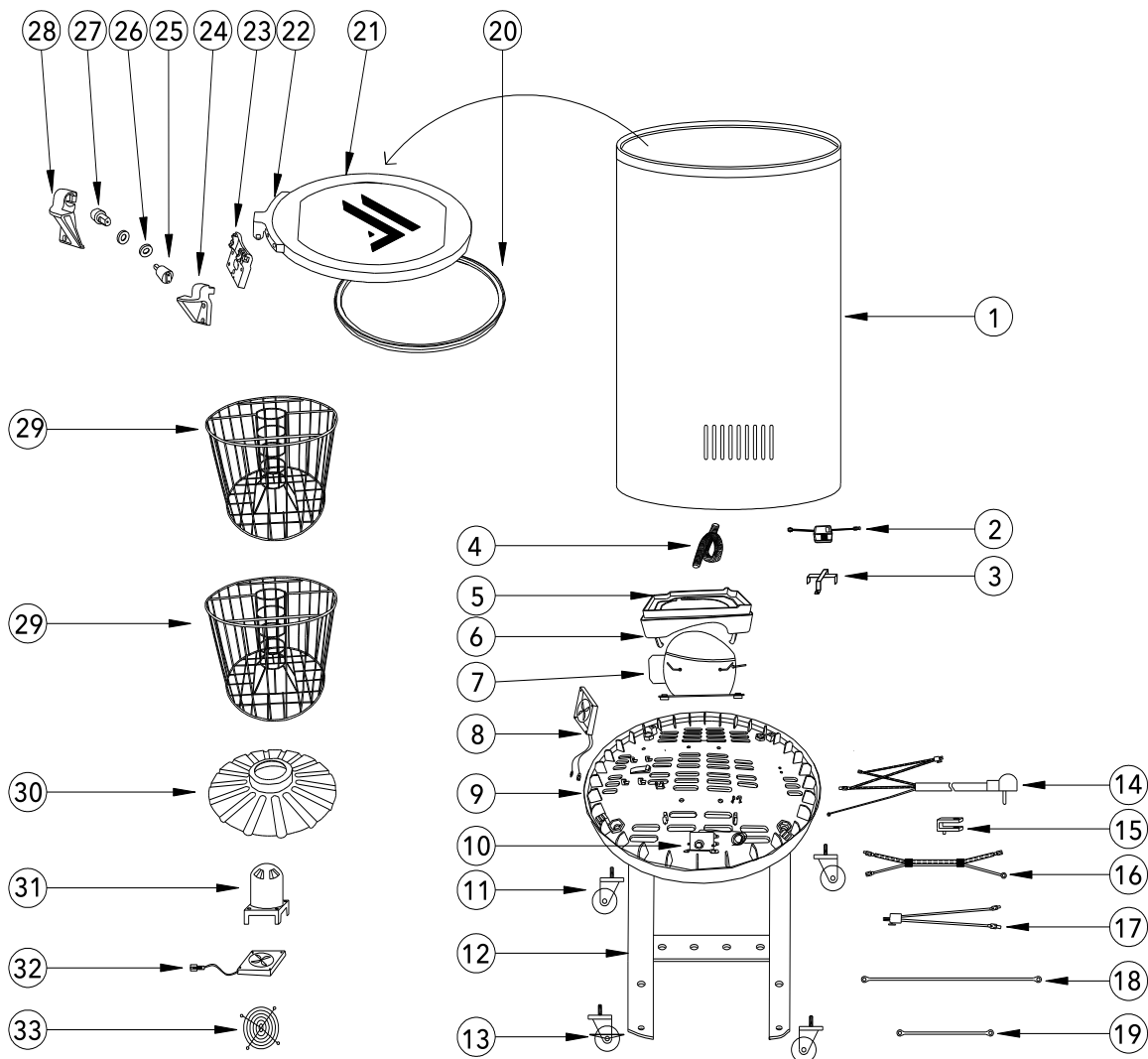


## PARTS & IDENTIFICATION



- |                        |                            |                              |
|------------------------|----------------------------|------------------------------|
| 1. Cooler Cabinet      | 13. Castor with Lock       | 25. Dampening System (Right) |
| 2. Transformer (2)     | 14. Power Supply           | 26. Hinge Washer (2)         |
| 3. Transformer Box (2) | 15. Plastic Cord Clip      | 27. Dampening System (Left)  |
| 4. Drain Hose          | 16. Thermostat Wire        | 28. Hinge Cover (Left)       |
| 5. Drip Pan Cover      | 17. Transformer Wire       | 29. Basket (2)               |
| 6. Drip Pan            | 18. Grounding Wire         | 30. Evaporator Fan Baffle    |
| 7. Compressor          | 19. Fan Grounding Wire     | 31. Evaporator Fan Cover     |
| 8. Compressor Fan      | 20. Lid Gasket             | 32. Evaporator Fan           |
| 9. Compressor Base     | 21. Lid Assembly           | 33. Fan Cover                |
| 10. Thermostat         | 22. Hinge Connecting Strip |                              |
| 11. Castor (3)         | 23. Dampener Base          |                              |
| 12. Base Support       | 24. Hinge Cover (Right)    |                              |