

# G-Series Cooler

Instruction Manual

G-77/G-80/G-80L

Models: Listed on Inside Cover

G-80



G-77



G-80L



G-Series Cooler  
Instruction Manual

G-77/G-80/G-80L

G-77 Models:  
G77-N23EB  
G77-NA34B

G-80 Models:  
G80-N23EB

G-80L Models:  
G80L-N23EB

Table of Contents

Parts & Identification Lists (G-77)..... 4-5

Parts & Identification Lists (G-80)..... 6

Parts & Identification Lists (G-80L) ..... 7

Safety Instructions..... 8

Installation..... 9

    Ambient Environment..... 9

    Preparation Prior to Operation ..... 9

    Electrical Requirements ..... 9

Leveling..... 10

Installation & Operation ..... 10

Beverage Storage..... 10

Clamp Installation (G-77/G-80)..... 10

Maintenance ..... 11

Graphic Replacement ..... 12

Lid Replacement (G-80L) ..... 12

Specifications ..... 13

Flammable Refrigerant Warnings ..... 13

Troubleshooting..... 14

Circuit Diagrams ..... 15

For Future Reference

- This easy-to-use manual will guide you in getting the best use of your cooler.
- Remember to record the model number and the serial number. This information can be found on the inside of your cooler.
- Keep your receipt with this manual for future warranty service.

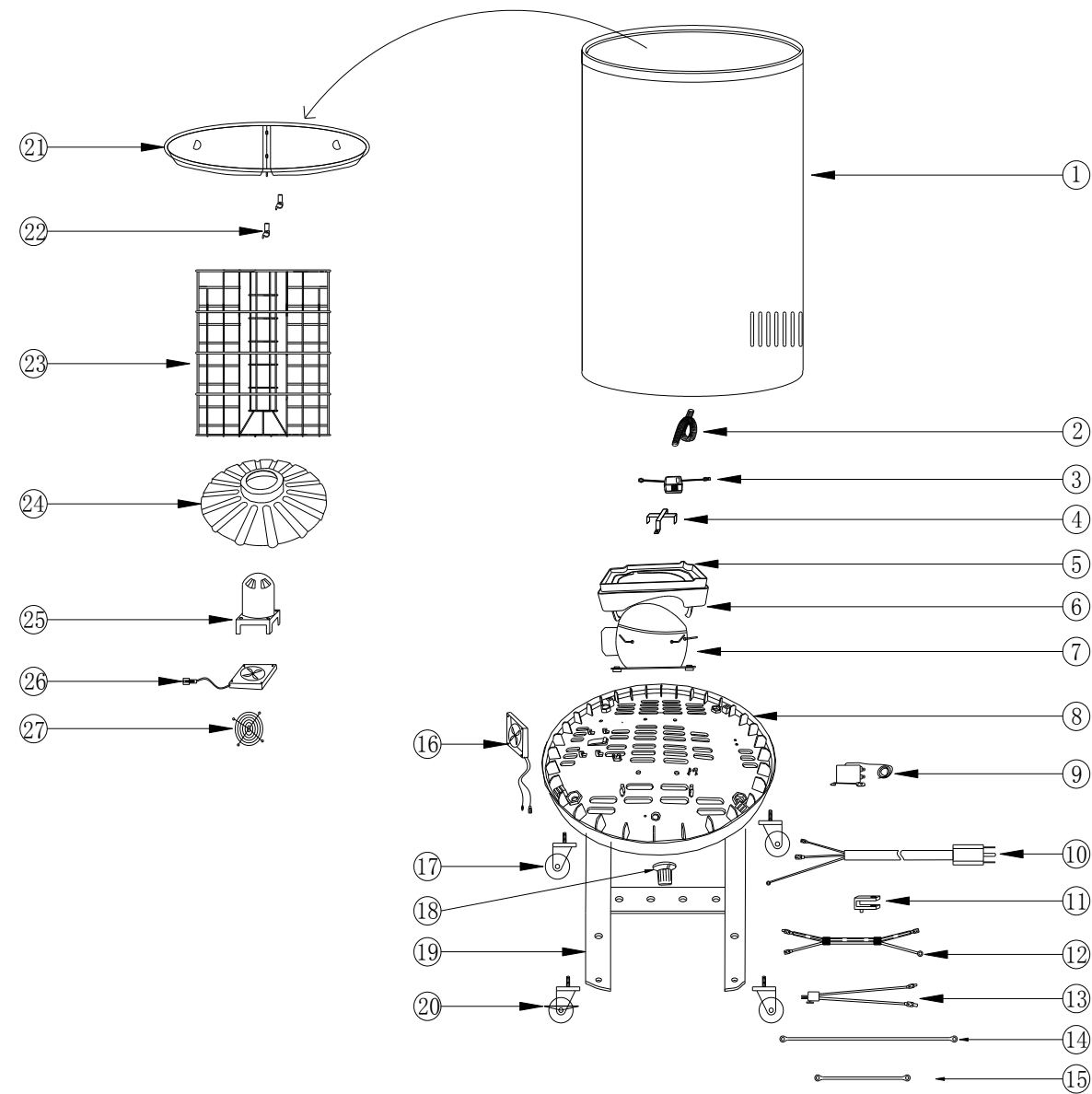
Model #: \_\_\_\_\_

Serial #: \_\_\_\_\_

Date of Purchase: \_\_\_\_\_

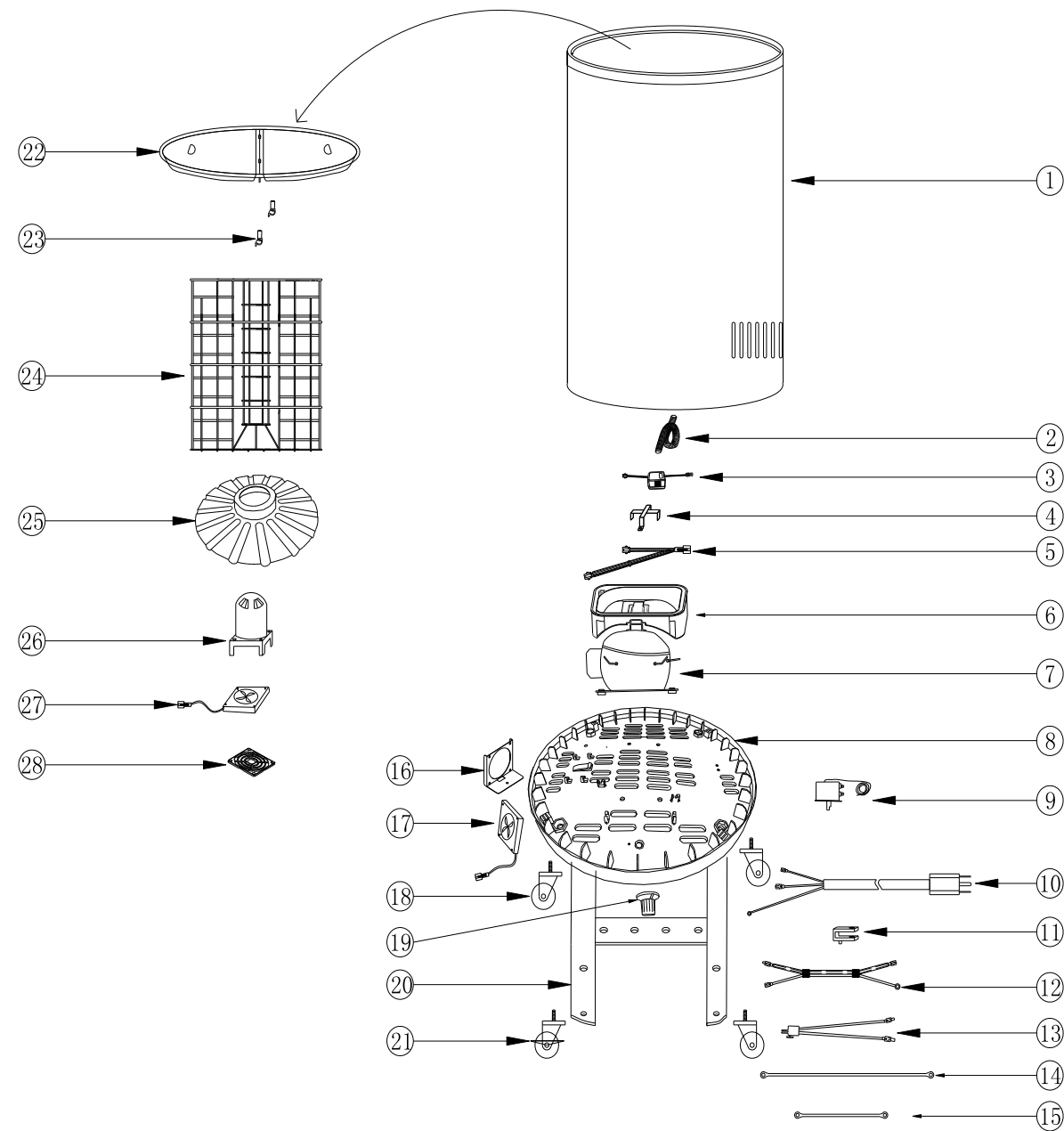


PARTS & IDENTIFICATION G-77-N23EB



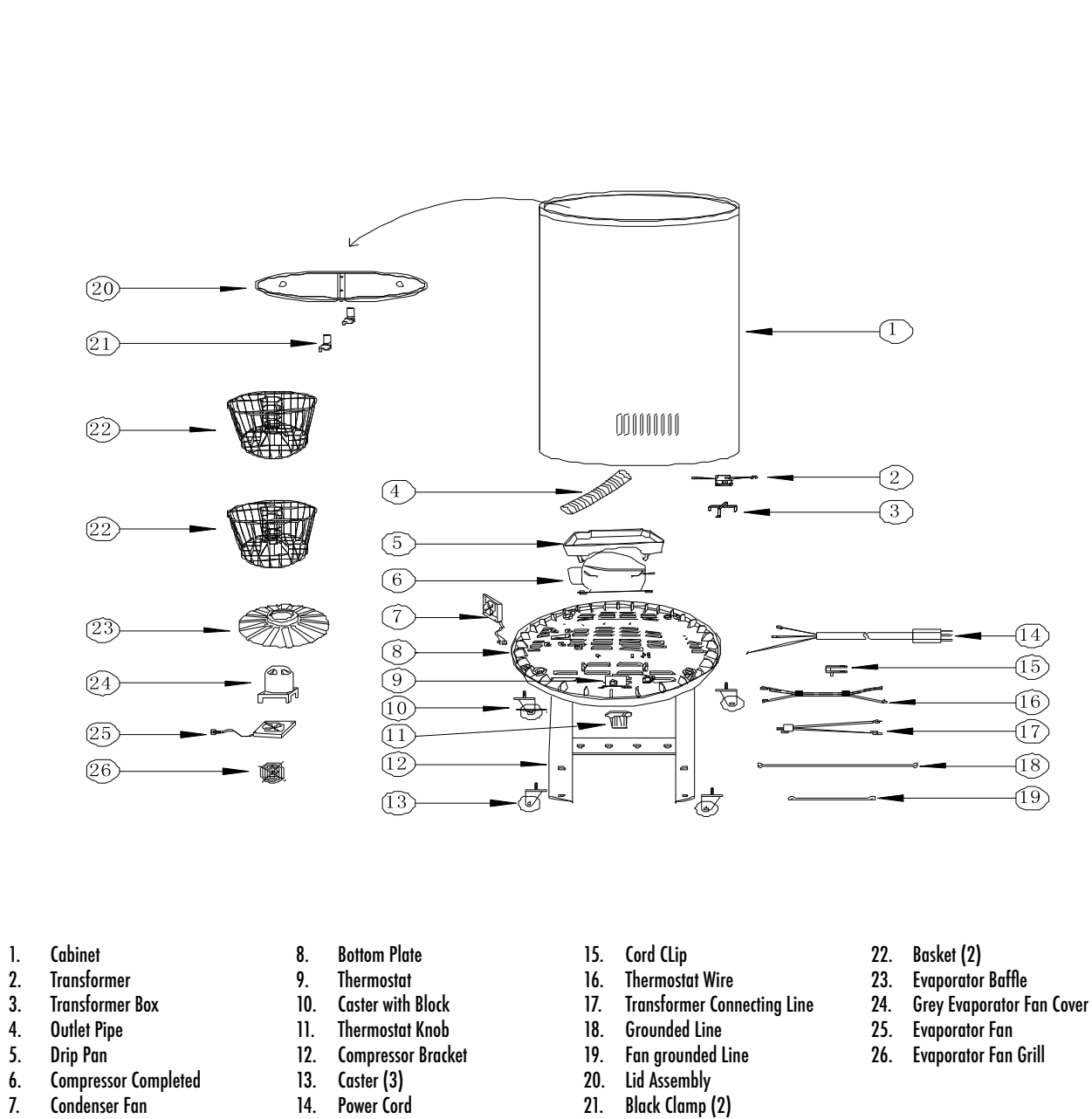
- |                    |                                 |                      |                          |
|--------------------|---------------------------------|----------------------|--------------------------|
| 1. Cooler Cabinet  | 8. Bottom Plate                 | 15. Fan Ground Line  | 22. Lid Clip (2)         |
| 2. Outlet Pipe     | 9. Thermostat                   | 16. Condenser Fan    | 23. Basket               |
| 3. Transformer     | 10. Power Cord                  | 17. Caster (3)       | 24. Evaporator Baffle    |
| 4. Transformer Box | 11. Power Cord Clip             | 18. Thermostat Knob  | 25. Evaporator Fan Cover |
| 5. Drip Pan Cover  | 12. Thermostat Wire             | 19. Base Supporter   | 26. Evaporator Fan       |
| 6. Drip Pan        | 13. Transformer Connecting Line | 20. Caster with Lock | 27. Evaporator Fan Grill |
| 7. Compressor      | 14. Ground Line                 | 21. Lid (2)          |                          |

PARTS & IDENTIFICATION G-77-NA34B

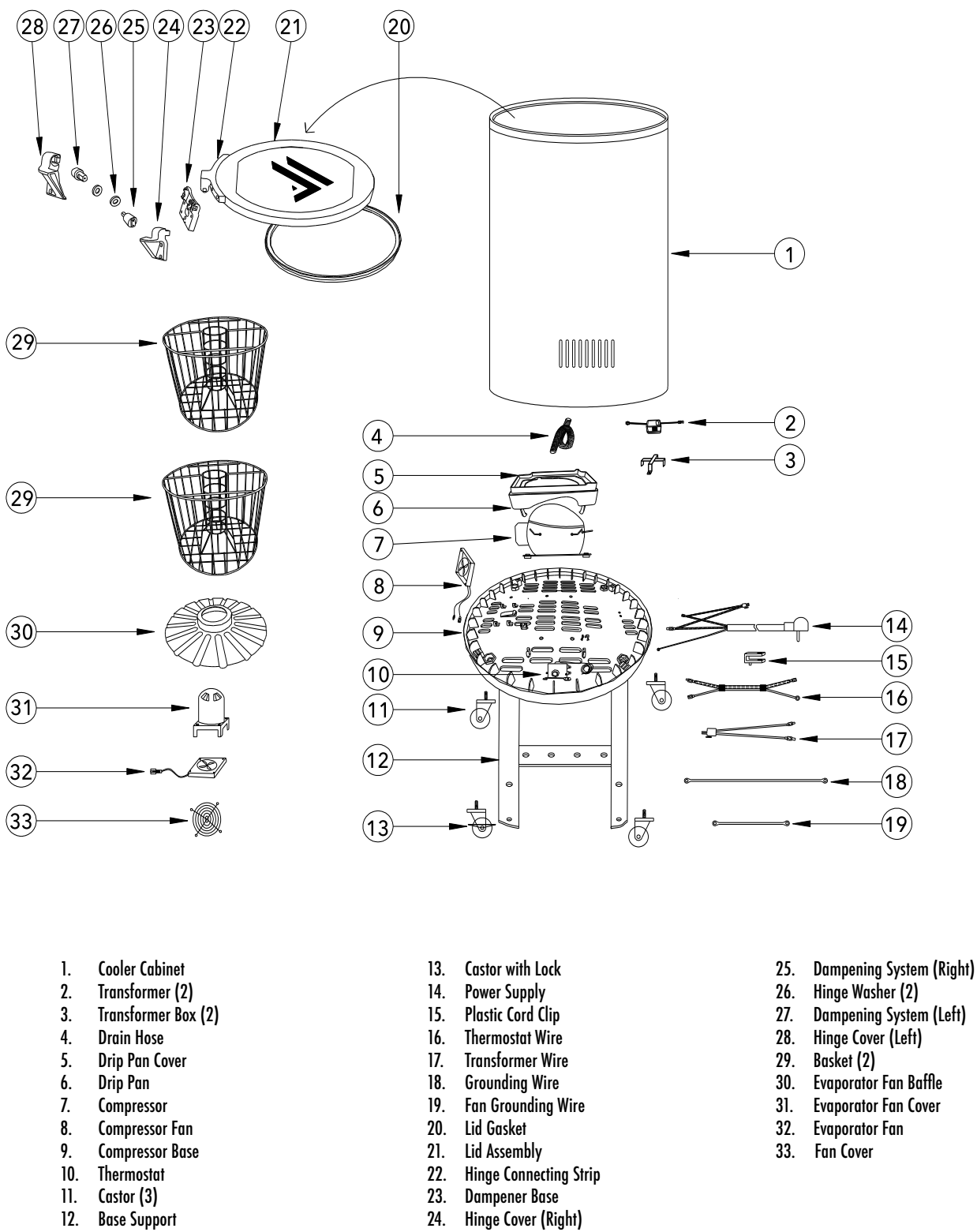


- |                         |                                 |                        |                               |
|-------------------------|---------------------------------|------------------------|-------------------------------|
| 1. Foam Cabinet         | 8. Bottom Plate                 | 15. Fan Grounded Line  | 22. Lid                       |
| 2. Outlet Pipe          | 9. Thermostat                   | 16. Fan Bracket        | 23. Black Clamp (2)           |
| 3. Transformer          | 10. Power Cord                  | 17. Condenser Fan      | 24. Basket                    |
| 4. Transformer Box      | 11. Cord Clip                   | 18. Caster (3)         | 25. Evaporator Baffle         |
| 5. Fan Connection       | 12. Thermostat Wire             | 19. Thermostat Knob    | 26. Grey Evaporator Fan Cover |
| 6. Drip Pan             | 13. Transformer Connecting Line | 20. Compressor Bracket | 27. Evaporator Fan            |
| 7. Compressor Completed | 14. Grounded Line               | 21. Caster with Block  | 28. Evaporator Fan Grill      |

PARTS & IDENTIFICATION G-80



PARTS & IDENTIFICATION G-80L



SAFETY INSTRUCTIONS

- 1. When using this appliance, always follow the basic safety precautions:
- 2. Read the entire User's Manual before operating this appliance.
- 3. Use this appliance only for its intended purpose as described in this User's Manual.
- 4. This cooler must be properly installed in accordance with the installation instructions before being used. See grounding instructions.
- 5. IDW requires that a dedicated circuit be used for the unit. Failure to do so voids warranty.
- 6. Never unplug your cooler by pulling on the power cord. Always grasp the plug firmly and pull it straight out from the outlet.
- 7. Unplug your cooler before cleaning or making any repairs.  
Note: If for any reason this product requires service, we strongly recommend that a certified technician perform the service.
- 8. When disconnecting the power source, wait at least 5 minutes to reconnect the power to avoid damage to the compressor and the cooling system.
- 9. Immediately repair or replace all electrical cords that have become frayed or otherwise damaged. Do not use a cord that shows cracks or abrasion damage along its length, the plug or the connector end.
- 10. Do not operate or store your cooler near or around explosive fumes, gasoline or other flammable vapors and liquids.
- 11. Do not use flammable liquids to clean unit.
- 12. Setting the temperature control to the 0 position does not remove power to the light circuit, perimeter heaters, or evaporator fans.
- 13. Do not adjust the temperature control. The temperature control is factory set between levels 4 and 5 for maximum performance.
- 14. To avoid damage to the casters, do not transport the cooler on rough surfaces.

PLEASE SAVE THESE INSTRUCTIONS!

DANGER!

PROPER DISPOSAL OF THE REFRIGERATOR

Pre-Caution, Non-Operating Coolers Should Have:

- 1. Lid removed.
- 2. Baskets kept in place in order to prevent any small child from climbing inside cooler.

For Proper Disposal of Cooler: Distributors/retailers need to contact a qualified service technician:

- 1. To recover all refrigerant from the cooler
- 2. To remove the compressor or remove the oil from the compressor

Then the distributor/retailer can contact their local metal recycling center to pick up the remaining cabinet, shelves, etc. By law, disposal of hazardous wastes may be subject to fines and imprisonment under the provisions of the environmental regulations. For more information please visit: <http://www.epa.gov/osw/hazard/index.htm>



INSTALLATION

Installation of the cooler must be done according to applicable local codes or equivalent.

Ambient Environment

- Place cooler on an even surface to reduce vibration and noise.
  - To transport, do not tilt the cooler beyond a 45 degree angle.
  - Do not place cooler in direct sunlight or near any heat sources.
  - Do not place cooler in environment temperatures that exceed 80°F.
  - Do not place cooler in below normal temperatures.
  - Do not place cooler in extreme humid environments, this may cause components to rust.
  - Do not place cooler near constant running or splattering water, this may cause immediate damage to refrigeration system.
  - Must allow at least 4" between rear of cooler and wall for proper ventilation and heat dissipation of cooler.
  - Do not place furniture or other articles with sharp edges near the cooler in order to prevent damage to the glass door.
  - This cooler is for indoor use.
  - Place unit in it's final location, making certain there is adequate ventilation in the room.
- WARNING:** Warranty is void if ventilation is insufficient.

Preparation Prior to Operation

- Remove all packaging materials before using cooler. This includes: foam pedestal, adhesive tape (used to fix accessories) and protective gaskets.
- Inspect cooler for concealed damage. Immediately file a claim with the freight carrier if there is damage. IDW is not responsible for damage incurred during shipping.
- Cooler must remain unplugged in an upright position for 1 hour prior to use.
- Clean the interior surface with a soft cloth and lukewarm water before operation.
- Ensure that drain hose or hoses are positioned in the pan.
- Remove plug and cord from inside the lower rear of the cooler.
- The unit should be placed close enough to the electrical supply so that extension cords are not used.

Electrical Requirements

- This model operates with a 110-120V/60Hz power supply. Check the electrical outlet for proper voltage.
  - Dedicate one outlet for the use of the cooler.
  - Do not use an extension cord or any other multiple connectors as this can lead to compressor failure.
  - If the cord is damaged, it must be replaced.
  - For your safety, plug the unit into a grounded wall outlet. Please check with a certified electrician for details.
- WARNING:** Do not use extension cords.  
**WARNING:** Compressor warranties are void if compressor burns out due to low voltage.  
**WARNING:** Power cord ground pin must NOT be removed!



## LEVELING

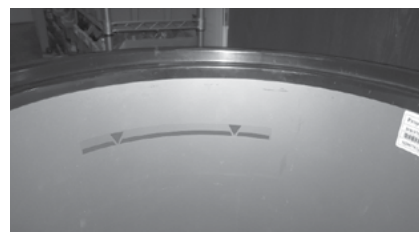
- Place unit in a well ventilated area.
- WARNING: Warranty is void if ventilation is insufficient.
- Unit must be leveled for proper operation, this will help prevent condensation.
- The cooler should be leveled front to back and side to side with a level.

## INSTALLATION AND OPERATION

- Connect the power source. After 30 minutes of operation, the unit should show signs of cooling.
- After the empty cooler has been operating for a period of 5 hours, the unit can be loaded with product.

## BEVERAGE STORAGE

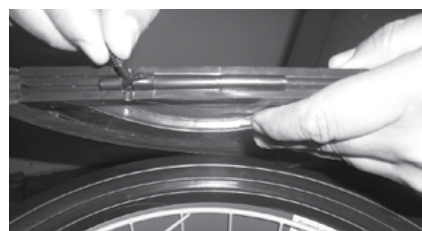
- Leave adequate space between beverage cans to allow air circulation
- This cooler is primarily for storing beverage cans and plastic bottles. Avoid putting glass containers in this cooler.
- All beverage products should be properly sealed to avoid leaking into the cooler.



## CLAMP INSTALLATION G-77 & G-80 Only



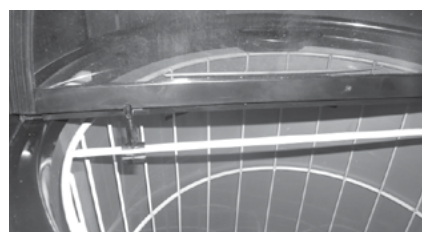
1. The clamp secures the lid assembly to the main body of the cabinet. Locate the (2) notches on the interior of the lid.



2. Snap the (2) bolts into the notches of the lid.



3. Snap the (2) bolts into the notches of the lid.



4. Hook the (2) clamps onto the center bar of the basket.



## MAINTENANCE

### Cleaning

- Before cleaning the appliance, always remember to unplug it.
- Unplug the cooler at the electrical outlet; never pull the service cord.
- Do not use sharp or pointed objects for cleaning.
- Clean the inside cabinet of the cooler with a clean damp cloth. Avoid damage by using non-abrasive and non-flammable cleaning products.
- Clean the condenser at least once a month with a vacuum cleaner or a brush to eliminate the dust accumulation.

### Moving The Cooler

- Empty the unit.
- Secure all loose parts inside the cooler.
- Tape the door shut.
- During transportation, make sure that the cooler is in an upright position.

### Drip Pan

- During normal compressor cycle, water will drain into the drain pan and evaporate.
- To clean, gently pull the drain pan towards you and remove. Slowly reinstall it after cleaning.

### Power Failure

- Please minimize the frequency of opening the door during a power failure.
- If your cooler is unused for an extended period of time, unplug, empty, and clean your cooler and keep the door open to avoid condensation, formation of mold, or odors.



1. Remove the basket from the inside of the cooler.



2. Remove the baffle from the base of cooler.



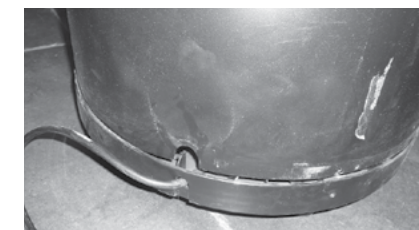
3. Using a Phillips screwdriver, unscrew the (4) screws at the base of the cooler.



4. The body of the cooler can now be worked free from the frame.



5. Lay the body of the cooler on its side to access components.



6. To re-assemble the cooler, align the notch at base with the cord. Then reverse steps 1-5.

GRAPHIC REPLACEMENT



1. Place graphic around barrel, making sure to align the grill holes in the graphic with the cooler for proper ventilation.



2. Wedge the graphic under the plastic frame of the cooler.

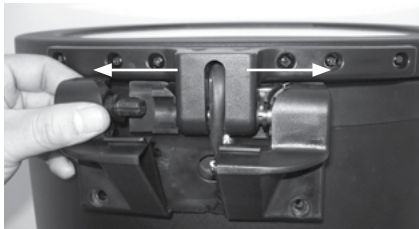


3. Remove the covering on the double stick tape to adhere the graphic in place.

LID REPLACEMENT G-80L Only



1. Unscrew (4) screws using a Phillip's screwdriver.



2. Remove the (2) hinge boxes in the direction of the arrows shown above.



3. Disconnect the door LED strand, replace the lid.  
4. Replace the lid following these instruction in reverse order.

SPECIFICATIONS

MODEL	VOLUME(L)	RATED VOLTAGE	RATED CURRENT	REFRIGERANT
G-77-N23EB	2.77ft³	110-120V/60Hz	1.3A	R600/30g
G-80-N23EB	2.62ft³		1.4A	
G-80L-N23EB				
NSF/ANSI-7: Beverage Cooler		A refrigerator intended solely for the storage and/or display of packaged beverage products that are non-potentially hazardous, such as soda (pop), beer, and wine.		

MODEL	VOLUME(L)	RATED VOLTAGE	RATED CURRENT	REFRIGERANT
G-77-NA34B	2.77ft <sup>3</sup>	110-120V/60Hz	1.3A	R600/30g
NSF/ASNI-7: Type II Display Refrigerator		A display refrigerator intended for use in an area where the environmental conditions are controlled and maintained so that the ambient temperature does not exceed 80°F (27°C).		



CAUTION FLAMMABLE REFRIGERANT

- **DANGER - Risk Of Fire Or Explosion.** Flammable Refrigerant Used. To Be Repaired Only By Trained Service Personnel. Do Not Puncture Refrigerant Tubing.
- **CAUTION - Risk Of Fire Or Explosion.** Flammable Refrigerant Used. Consult Repair Manual/Owner's Guide Before Attempting To Install or Service This Product. All Safety Precautions Must be Followed.
- **CAUTION - Risk Of Fire Or Explosion.** Dispose Of Properly In Accordance With Federal Or Local Regulations. Flammable Refrigerant Used.
- **CAUTION - Risk Of Fire Or Explosion** Due To Puncture Of Refrigerant Tubing; Follow Handling Instructions Carefully. Flammable Refrigerant Used.
- **CAREFUL** - Handling, moving and operating of the refrigerator or freezer to avoid either damaging the refrigerant tubing, or increasing the risk of a leak.
- **CAUTION** - Component parts shall be replaced with like components and that servicing shall be done by factory authorized service personnel, so as to minimize the risk of possible ignition due to incorrect parts or improper service.



TROUBLESHOOTING

The following are NOT malfunctions:

Situation	Causes
Liquid flowing noise within cooler	<ul style="list-style-type: none"><li>This is the sound of the cooling agent flowing through the pipes.</li></ul>
Refrigeration system is shutdown for longer periods of time while temperature inside is still very low	<ul style="list-style-type: none"><li>This refrigerator is well insulated and can maintain a relatively ambient temperature.</li></ul>
Condensation on door/lid	<ul style="list-style-type: none"><li>This may be due to a high indoor humidity or the cooler's temperature is set too low. Wipe the door dry with a towel.</li></ul>

- 1 This refrigerator has been designed and manufactured according to National standards. If there are any questions during use, refer to this operation manual to help troubleshoot problems.
- 2 When disposing of the cooler, please remove the door/lid and lock assembly to avoid children accidentally becoming trapped inside the cooler.

Prior to calling service, check the following:

Issues	Solutions
Cooler is not working properly	<div>Please check power supply:</div> <ul style="list-style-type: none"><li>Check the electrical outlet for power, and that the plug is properly inserted.</li><li>Check to see if the circuit breaker is tripped or the fuse is blown.</li><li>Check if the condenser is free of dirt and debris.</li><li>Check for low voltage</li></ul>
Cooler is not keeping product cool	<ul style="list-style-type: none"><li>Provide ample space between all products to ensure proper circulation of air.</li><li>Keep unit away from direct sunlight or other heating source.</li><li>Keep the door closed as often as possible.</li><li>Be certain the cooler is not touching external objects or walls.</li></ul>
Excessive noise	<ul style="list-style-type: none"><li>Be certain the cooler is placed on a level surface.</li><li>Be certain the cooler is not touching external objects or walls.</li></ul>
Compressor turns on and off frequently	<ul style="list-style-type: none"><li>The room temperature is higher than normal.</li><li>The door is not closed completely.</li><li>The door gasket is not sealed properly.</li><li>There is insufficient clearance around the cooler.</li><li>The thermostat is not set properly.</li><li>The frequency of cycling will be reduced when all of the product reaches the set temperature.</li></ul>

AFTER SALES SERVICE

Any product has the possibility of malfunction. Please observe the cooler’s operation and any changes to product being stored. If there are any abnormal cases, refer to the table below. If there is still no change after following the below instructions, please inform our service center in a timely manner to avoid a further loss of the unit.

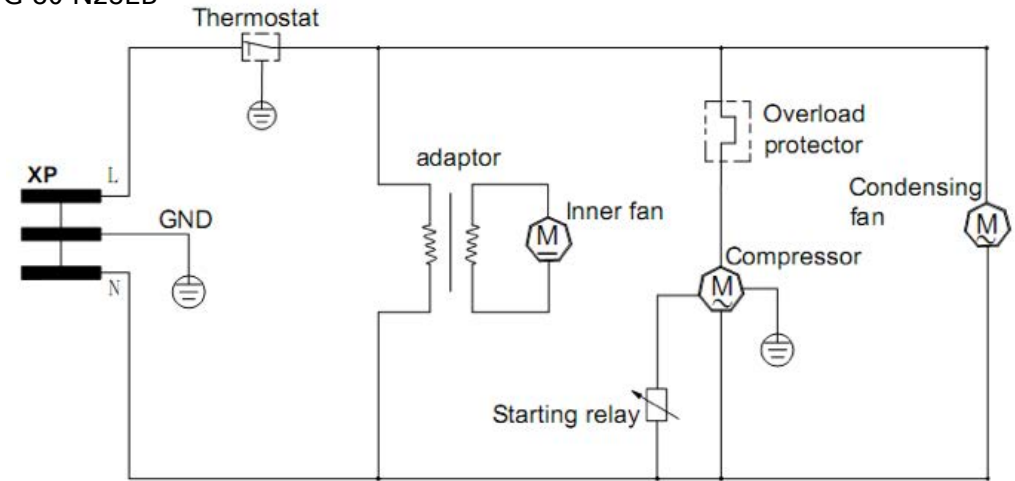
Information to provide to your qualified service professional:

- Serial number from the interior wall of the cooler
  - Coolers’ installation address and contact information
  - Installation location hours and operation
  - Nature of problem
  - Any reports of power interruptions
- Recent service or maintenance completed on the cooler
  - Has the cooler been relocated from original installation location
  - Clear access to the cooler
  - Coolers’ instruction manual



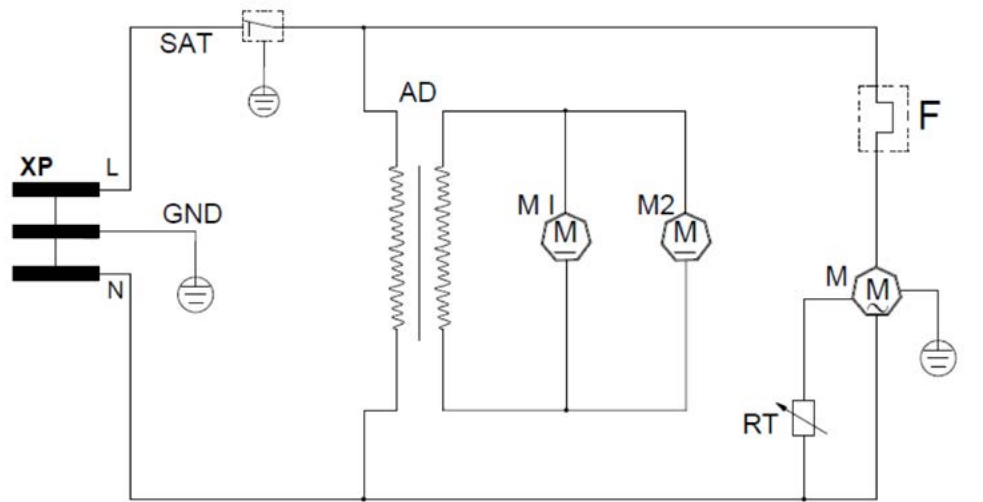
G-77 & G-80 CIRCUIT DIAGRAM

For models: G-77-N23EB, G-80-N23EB



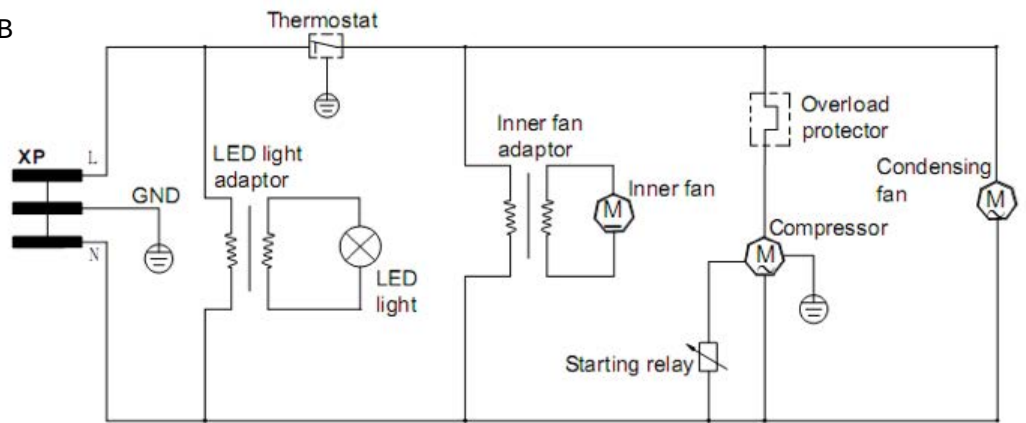
G-77 CIRCUIT DIAGRAM

For models: G-77-NA34B



G-80L CIRCUIT DIAGRAM

For models: G-80L-N23EB







*Innovative DisplayWorks, Inc.*

To locate the distributor in your area go to: <http://www.idw.global/contact/#distributors>