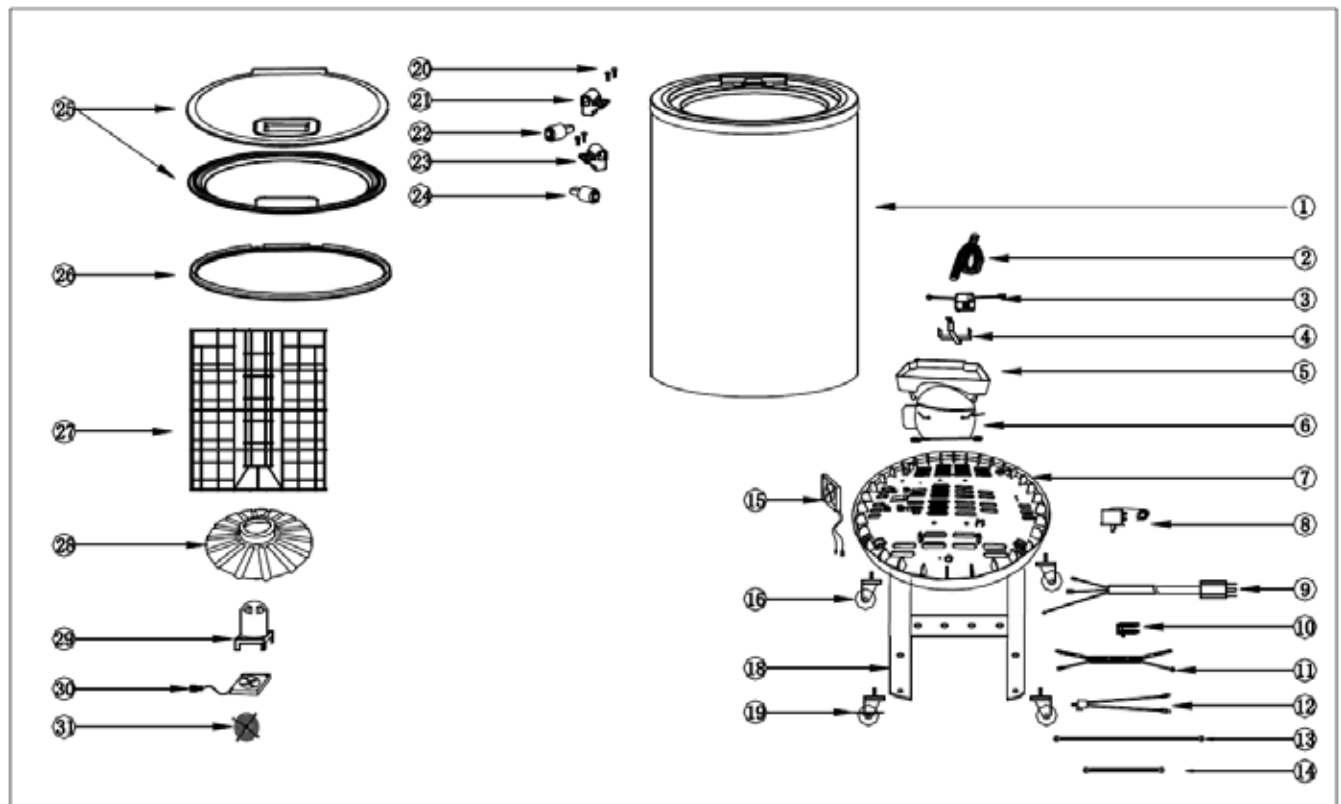


PARTS & IDENTIFICATION



- | | | | |
|--------------------|---------------------------------|------------------------------------|--------------------------|
| 1. Cabinet | 9. Power Cord | 17. Compressor Bracket | 25. Lid Gasket |
| 2. Drain Tube | 10. Cord Clip | 18. Caster with Lock | 26. Basket |
| 3. Transformer | 11. Thermostat Wire | 19. Black Screw (M5) (4) | 27. Fan Baffle |
| 4. Transformer Box | 12. Transformer Connection Wire | 20. Right Damper Bracket | 28. Evaporator Fan Cover |
| 5. Drain Pan | 13. Grounded Line | 21. Right Damper | 29. Evaporator Fan |
| 6. Compressor | 14. Fan Grounded Line | 22. Left Damper Bracket | 30. Evaporator Fan Grill |
| 7. Compressor Base | 15. Condenser Fan | 23. Left Damper | |
| 8. Thermostat | 16. Caster (3) | 24. Up Lid Panel/ Bottom Lid Panel | |

