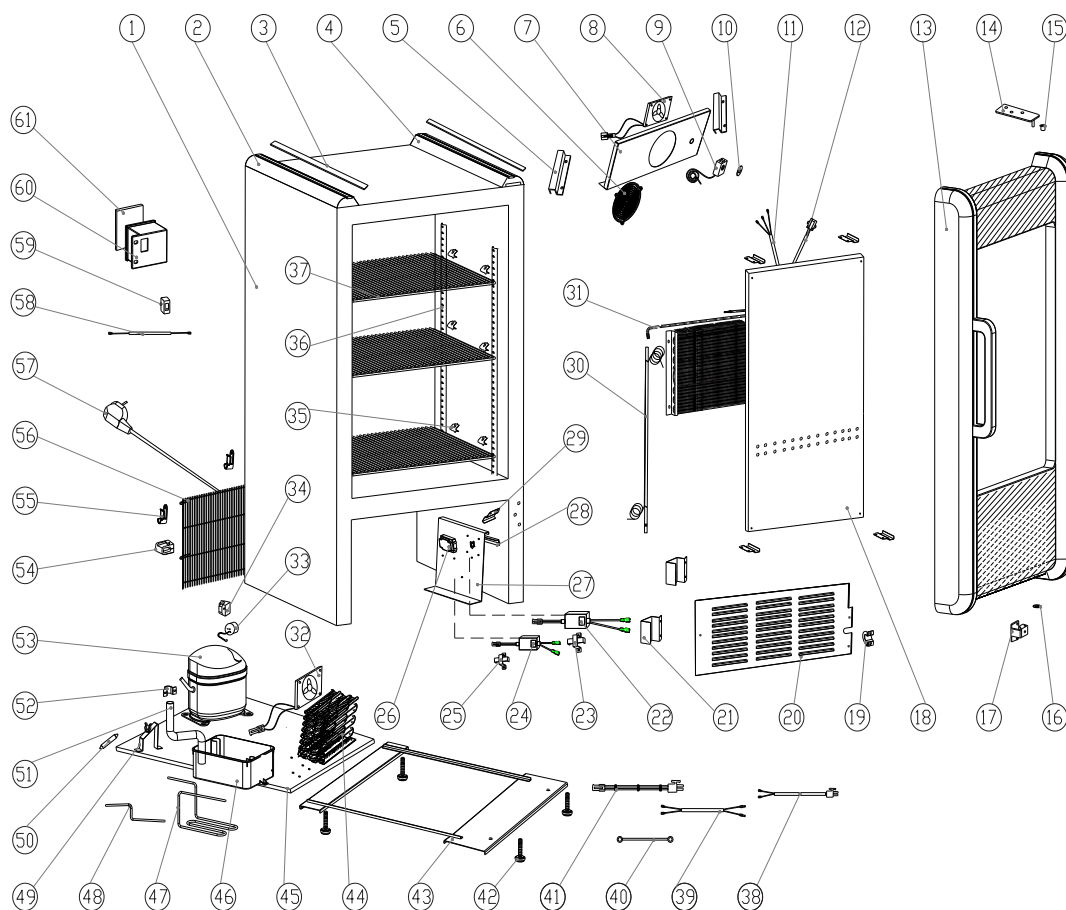


PARTS & IDENTIFICATION



- | | | | |
|-------------------------------------|-------------------------------------|-----------------------------------|----------------------------|
| 1. Cabinet | 17. Bottom Hinge | 33. Overload Breaker | 49. Dry Filter Clip |
| 2. Cabinet Top Left Trim | 18. Evaporator Safeguard | 34. Starter Relay | 50. Filter Dryer |
| 3. Cabinet Silver Strip (2) | 19. Wire Protecting PLate | 35. Shelf Clips (8) | 51. Drain Pipe |
| 4. Cabinet Top Right Trim | 20. Cabinet Bottom Grill | 36. Shelf Pilasters (4) | 52. Hoop |
| 5. Evaporator Safeguard Bracket (2) | 21. Wire Protecting Bracket (2) | 37. Flat Shelf (2) | 53. Compressor |
| 6. Evaporator Fan Shroud | 22. Transformer for Light | 38. Condenser Fan Connecting Wire | 54. Plastic Clip |
| 7. Evaporator Safeguard | 23. Transformer Box (1) | 39. Compressor Connecting Wire | 55. Rear Compartment Grill |
| 8. Evaporator Fan | 24. Transformer for Evaporating Fan | 40. Ground Wire | 56. Power Cord |
| 9. Thermostat | 25. Transformer Box (2) | 41. Transformer Connecting Wire | 57. Pedestal (2) |
| 10. Thermostat Label | 26. Wires Box | 42. Leveling Leg (4) | 58. Switch Connecting Wire |
| 11. Thermostat Connecting Wire | 27. Electrical Board | 43. Castor Installation Base | 59. Light Switch |
| 12. Evaporator Fan Connecting Wire | 28. Wire Tray Bracket | 44. Condenser | 60. Switch Box |
| 13. Door Assembly | 29. Elastic Clip (4) | 45. Compressor Base | 61. Switch Box Cover |
| 14. Top Hinge | 30. Return Tube Group | 46. Drip Pan | |
| 15. Top Hinge Block Piece | 31. Evaporator | 47. Connecting Pipe | |
| 16. Washer | 32. Condenser Fan | 48. Filter Connecting Pipe | |