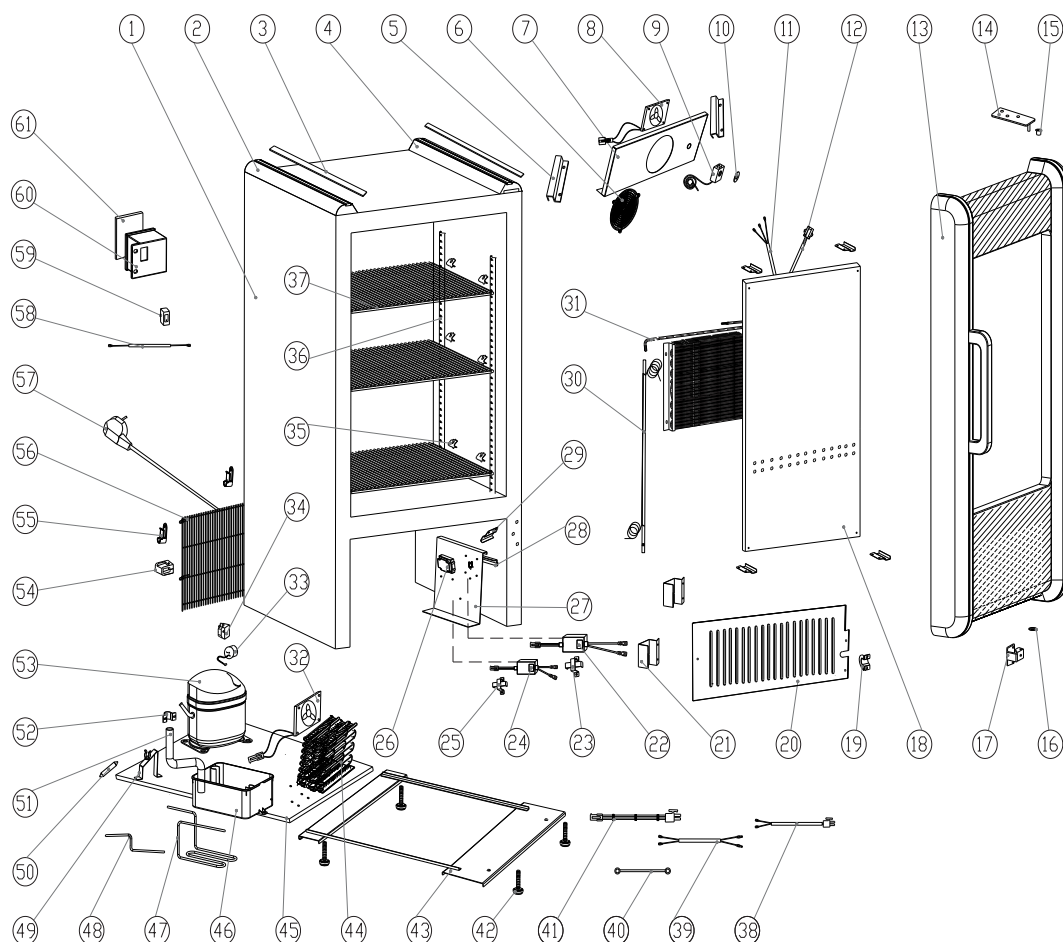


## PARTS & IDENTIFICATION



- |                                    |                                    |                                   |                            |
|------------------------------------|------------------------------------|-----------------------------------|----------------------------|
| 1. Cabinet                         | 17. Bottom Hinge                   | 33. Overload Breaker              | 49. Dry Filter Clip        |
| 2. Cabinet Top Left Trim           | 18. Evaporator Safeguard           | 34. Starter Relay                 | 50. Filter Dryer           |
| 3. Cabinet Silver Strip            | 19. Wire Protecting PLate          | 35. Shelf Clip                    | 51. Drain Pipe             |
| 4. Cabinet Top Right Trim          | 20. Cabinet Bottom Grill           | 36. Shelf Pilasters               | 52. Hoop                   |
| 5. Evaporator Safeguard Bracket    | 21. Wire Protecting Bracket        | 37. Flat Shelf                    | 53. Compressor             |
| 6. Evaporator Fan Shroud           | 22. Transformer for Light          | 38. Condenser Fan Connecting Wire | 54. Plastic Clip           |
| 7. Evaporator Safeguard            | 23. Transformer Box (1)            | 39. Compressor Connecting Wire    | 55. Rear Compartment Grill |
| 8. Evaporator Fan                  | 24. Transformer for Evaporator Fan | 40. Ground Wire                   | 56. Power Cord             |
| 9. Thermostat                      | 25. Transformer Box (2)            | 41. Transformer Connecting Wire   | 57. Pedestal               |
| 10. Thermostat Label               | 26. Wires Box                      | 42. Leveling Leg                  | 58. Switch Connecting Wire |
| 11. Thermostat Connecting Wire     | 27. Electrical Board               | 43. Castor Installation Base      | 59. Light Switch           |
| 12. Evaporator Fan Connecting Wire | 28. Wire Tray Bracket              | 44. Condenser                     | 60. Switch Box             |
| 13. Door Assembly                  | 29. Elastic Clip                   | 45. Compressor Base               | 61. Switch Box Cover       |
| 14. Top Hinge                      | 30. Return Tube Group              | 46. Drip Pan                      |                            |
| 15. Top Hinge Block Piece          | 31. Evaporator                     | 47. Connecting Pipe               |                            |
| 16. Washer                         | 32. Condenser Fan                  | 48. Filter Connecting Pipe        |                            |