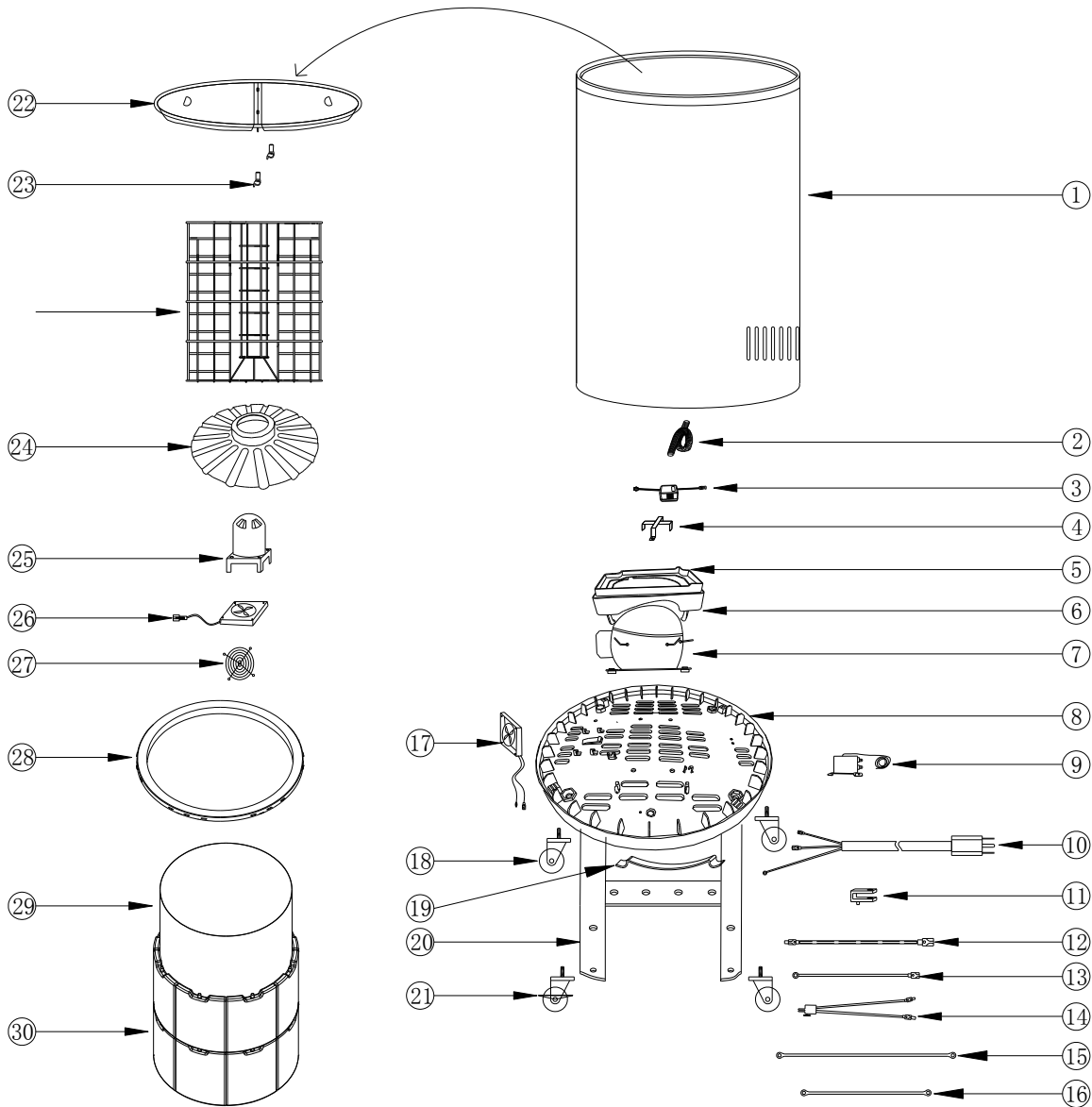


# PARTS & IDENTIFICATION



- 1. Cooler Cabinet
- 2. Outlet Pipe
- 3. Transformer
- 4. Transformer Box
- 5. Drip Pan Cover
- 6. Drip Pan
- 7. Compressor
- 8. Bottom Plate
- 9. Thermostat
- 10. Power Cord
- 11. Power Cord Clip

- 12. Thermostat Wire
- 13. Compressor Connecting Line
- 14. Transformer Connecting Line
- 15. Ground Line
- 16. Fan Ground Line
- 17. Condenser Fan
- 18. Caster (3)
- 19. Power Cord Holder
- 20. Base Supporter
- 21. Caster with Lock
- 22. Lid (2)

- 23. Lid Clip (2)
- 24. Basket
- 25. Evaporator Baffle
- 26. Evaporator Fan Cover
- 27. Evaporator Fan
- 28. Evaporator Fan Grill
- 29. Rim
- 30. Coolant Box Inner
- 31. Coolant Box (16)