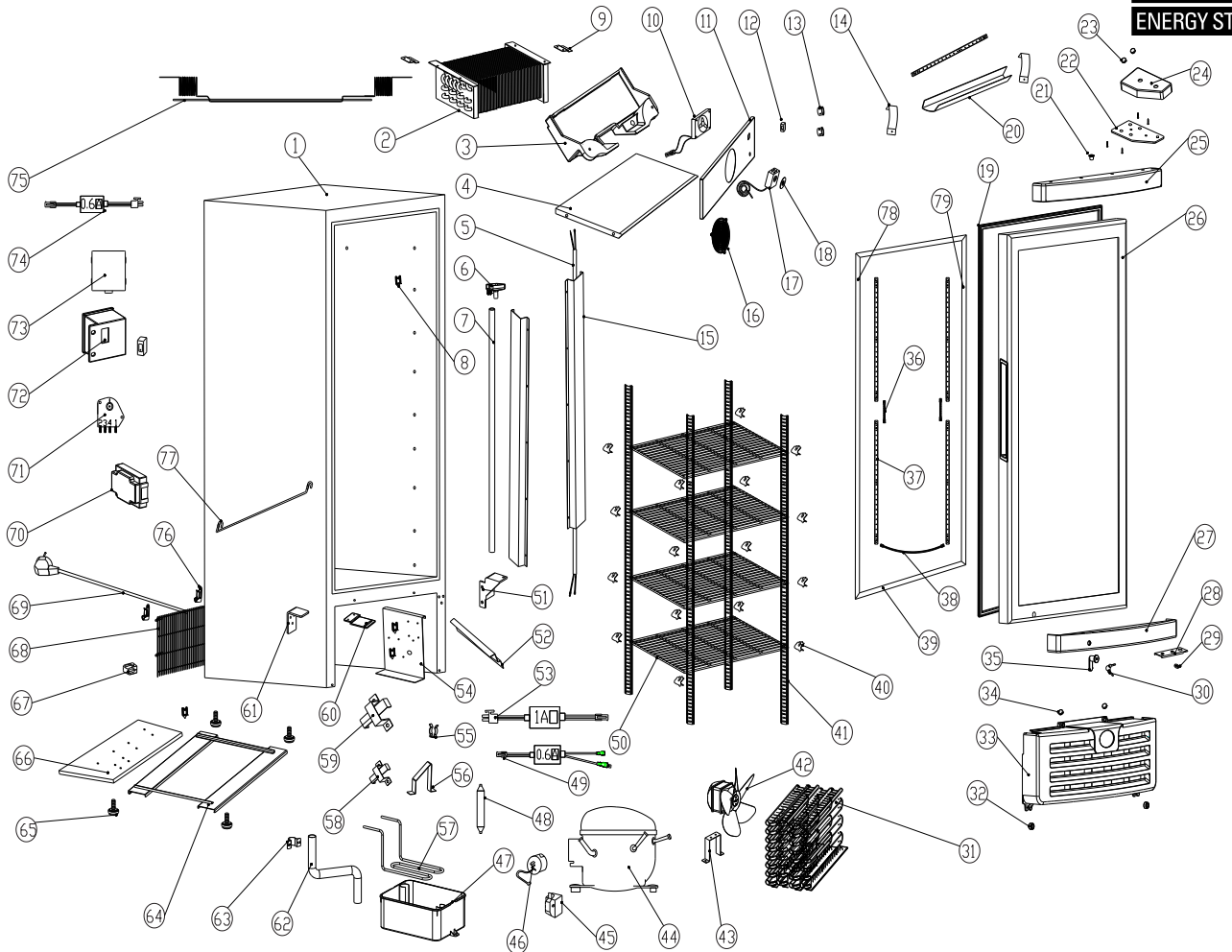




PARTS & IDENTIFICATION



- | | | | |
|--------------------------------|-----------------------------|-------------------------------|------------------------------------|
| 1. Cabinet | 21. Bushings | 41. Pilasters | 61. Glass Door Support |
| 2. Evaporator | 22. Upper Hinge | 42. Condenser Fan | 62. Drain Connected Pipe |
| 3. Fan Foam | 23. Rubber Cover | 43. Condenser Fan Motor Brace | 63. Hoop |
| 4. Drain Funnel Support | 24. Top Hinge Cover | 44. Compressor | 64. Caster Installation Base |
| 5. Connecting Wire | 25. Adornment (Top) | 45. Starter Relay | 65. Leveler Legs |
| 6. Drain Funnel | 26. Glass Door | 46. Overload Breaker | 66. Compressor Base |
| 7. Drain Pipe | 27. Adornment (Bottom) | 47. Drip Pan | 67. Plastic Clip |
| 8. Wires Clip | 28. Door Stop (Bottom) | 48. Filter Drier | 68. Rear Compartment Grill |
| 9. Evaporator Bracket | 29. Washer | 49. Transformer (600mA) | 69. Power Cord |
| 10. Evaporator Fan | 30. Key | 50. Flat Shelf | 70. Wires Box |
| 11. Evaporator Fan Motor Brace | 31. Condenser | 51. Bottom Hinge | 71. Defrost Timer |
| 12. LED Light Switch | 32. Front Grill Clip | 52. Wire Tray Bracket | 72. Switch Box |
| 13. Wire Sleeve | 33. Front Grill | 53. Transformer (1A) | 73. Switch Box Cover |
| 14. Light Cover Bracket | 34. Rubber Cover | 54. Electrical Board | 74. Transformer for Evaporator Fan |
| 15. Corner Cover | 35. Lock | 55. Dry-Filter Clip | 75. Suction Tube and Capillary |
| 16. Evaporator Fan Shroud | 36. LED Panel Wire (1) | 56. Dry-Filter Bracket | 76. Pedestal |
| 17. Thermostat | 37. LED Light | 57. Connecting Pipe | 77. Interior Rear Holder |
| 18. Label | 38. LED Panel Wires (2) | 58. Transformer Box (1) | 78. Glass Door Light Cover (left) |
| 19. Glass Door Seal Gasket | 39. Glass Door Light Covers | 59. Transformer Box (2) | 79. Glass Door Light Cover (right) |
| 20. Inside Light Cover | 40. Shelf Clip | 60. Lock Holder | |

