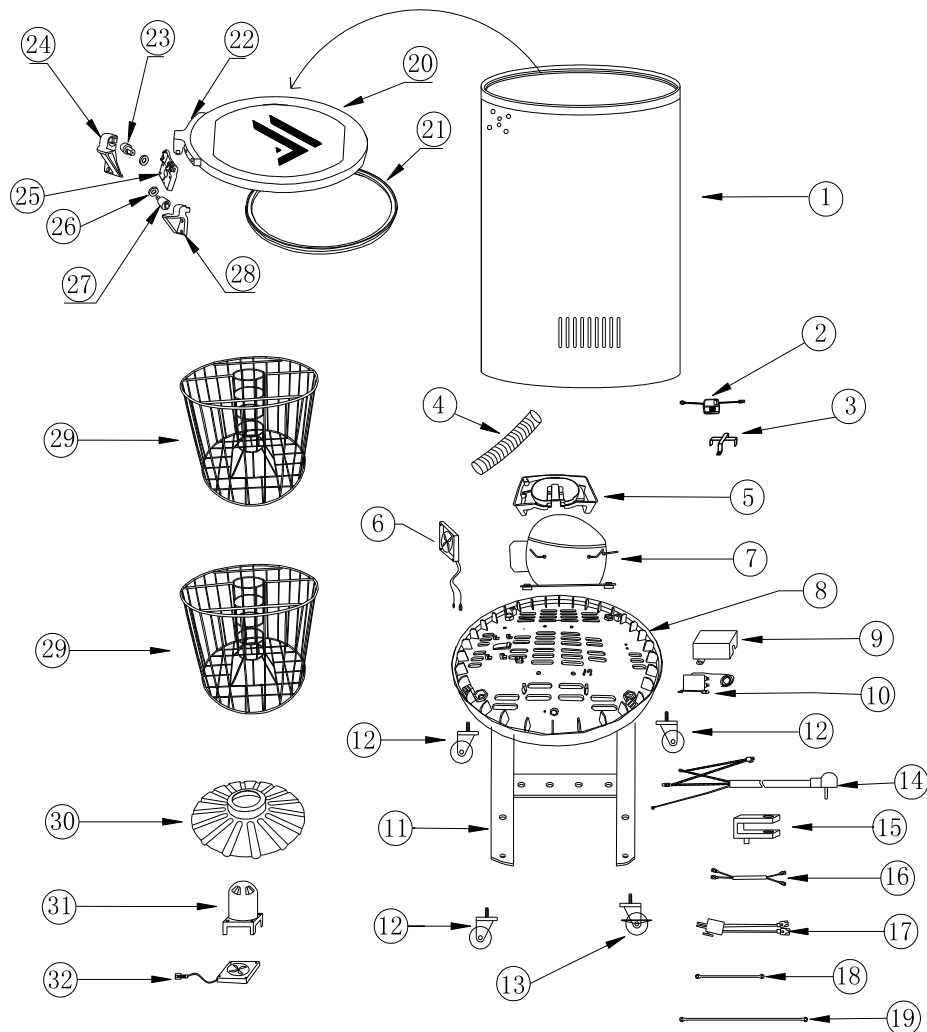


PARTS & IDENTIFICATION



- 1. Barrel Cabinet
- 2. Transformer (2)
- 3. Transformer Box (2)
- 4. Drain Tube
- 5. Drip Pan
- 6. Condenser Fan
- 7. Compressor
- 8. Compressor Base
- 9. Thermostat Box Cover

- 10. Thermostat
- 11. Wheels (swivel, 3)
- 12. Wheels (locking, 1)
- 13. Power Cord
- 14. Retaining Clip of Line
- 15. Support
- 16. Thermostat Wire
- 17. Transformer Wire
- 18. Fan Grounding Wire

- 19. Ground Wire
- 20. Gasket
- 21. Door
- 22. Hinge Connecting Strip
- 23. Damper Base
- 24. Hinge Cover (left)
- 25. Damper (left)
- 26. Hinge Gasket (2)
- 27. Damper (right)

- 28. Hinge Cover (right)
- 29. Basket (2)
- 30. Inner Fan Baffle
- 31. Inner Fan Cover
- 32. Inner Fan

