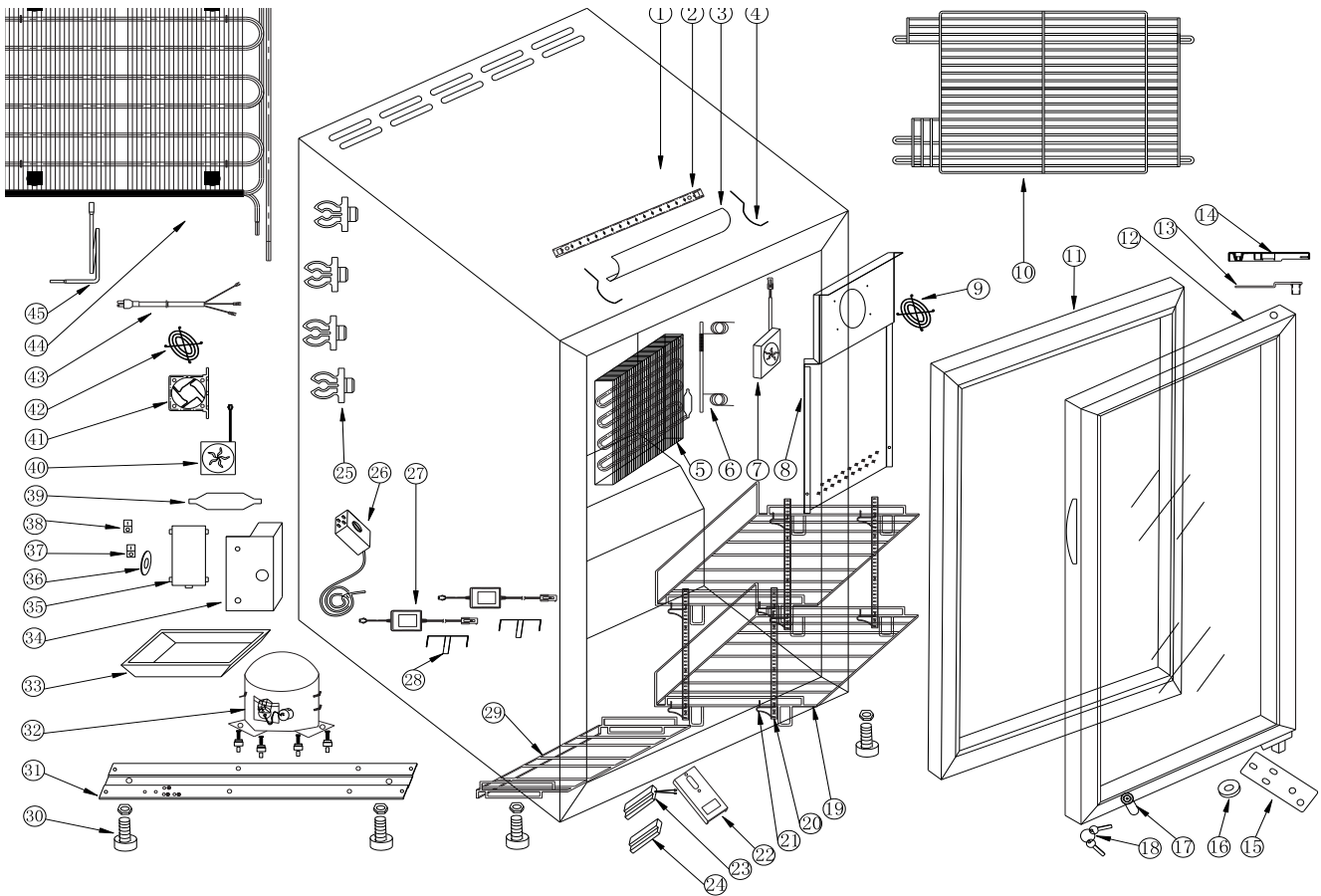


# PARTS & IDENTIFICATION



- |                                   |                         |                            |                           |
|-----------------------------------|-------------------------|----------------------------|---------------------------|
| 1. Cabinet                        | 13. Upper Hinge Board   | 25. Condenser Bracket (4)  | 37. Door Light Switch     |
| 2. Interior Light                 | 14. Hinge Cover         | 26. Thermostat             | 38. Interior Light Switch |
| 3. Interior Light Cover           | 15. Bottom Hinge Board  | 27. Transformer            | 39. Filter Dryer          |
| 4. Interior Light Cover Board (2) | 16. Bottom Hinge Washer | 28. Transformer Box        | 40. Condenser Fan         |
| 5. Evaporator                     | 17. Lock                | 29. Small Shelf            | 41. Condenser Fan Cover   |
| 6. Return Pipe                    | 18. Key (2)             | 30. Leveling Leg (4)       | 42. Condenser Fan Cover   |
| 7. Evaporator Fan                 | 19. Large Shelf (2)     | 31. Compressor Base        | 43. Power Cord            |
| 8. Evaporator Plate               | 20. Bracket (4)         | 32. Compressor             | 44. Condenser             |
| 9. Evaporator Fan Cover Grill     | 21. Clip (8)            | 33. Drip Pan               | 45. Junction Pipe         |
| 10. Rear Grill                    | 22. Lockpin             | 34. Thermostat Box         |                           |
| 11. Door Gasket                   | 23. Magnetic Switch     | 35. Thermostat Box Cover   |                           |
| 12. Glass Door                    | 24. Magnet              | 36. Thermostat Level Label |                           |