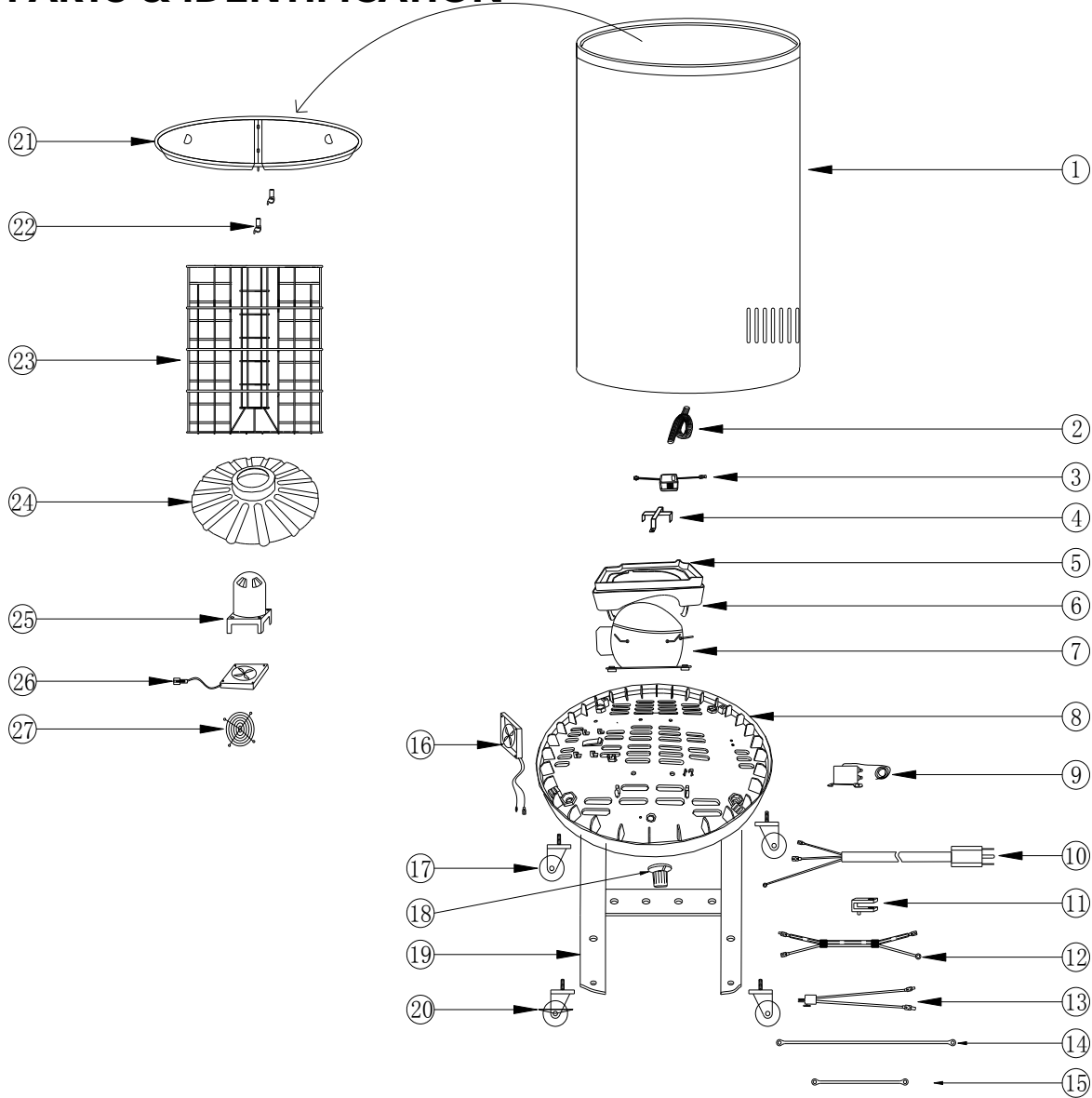


# PARTS & IDENTIFICATION



- |                                 |                          |
|---------------------------------|--------------------------|
| 1. Cooler Cabinet               | 15. Fan Ground Line      |
| 2. Outlet Pipe                  | 16. Condenser Fan        |
| 3. Transformer                  | 17. Caster (3)           |
| 4. Transformer Box              | 18. Thermostat Knob      |
| 5. Drip Pan Cover               | 19. Base Supporter       |
| 6. Drip Pan                     | 20. Caster with Lock     |
| 7. Compressor                   | 21. Lid (2)              |
| 8. Bottom Plate                 | 22. Lid Clip(2)          |
| 9. Thermostat                   | 23. Basket               |
| 10. Power Cord                  | 24. Evaporator Baffle    |
| 11. Power Cord Clip             | 25. Evaporator Fan Cover |
| 12. Thermostat Wire             | 26. Evaporator Fan       |
| 13. Transformer Connecting Line | 27. Evaporator Fan Grill |
| 14. Ground Line                 |                          |

