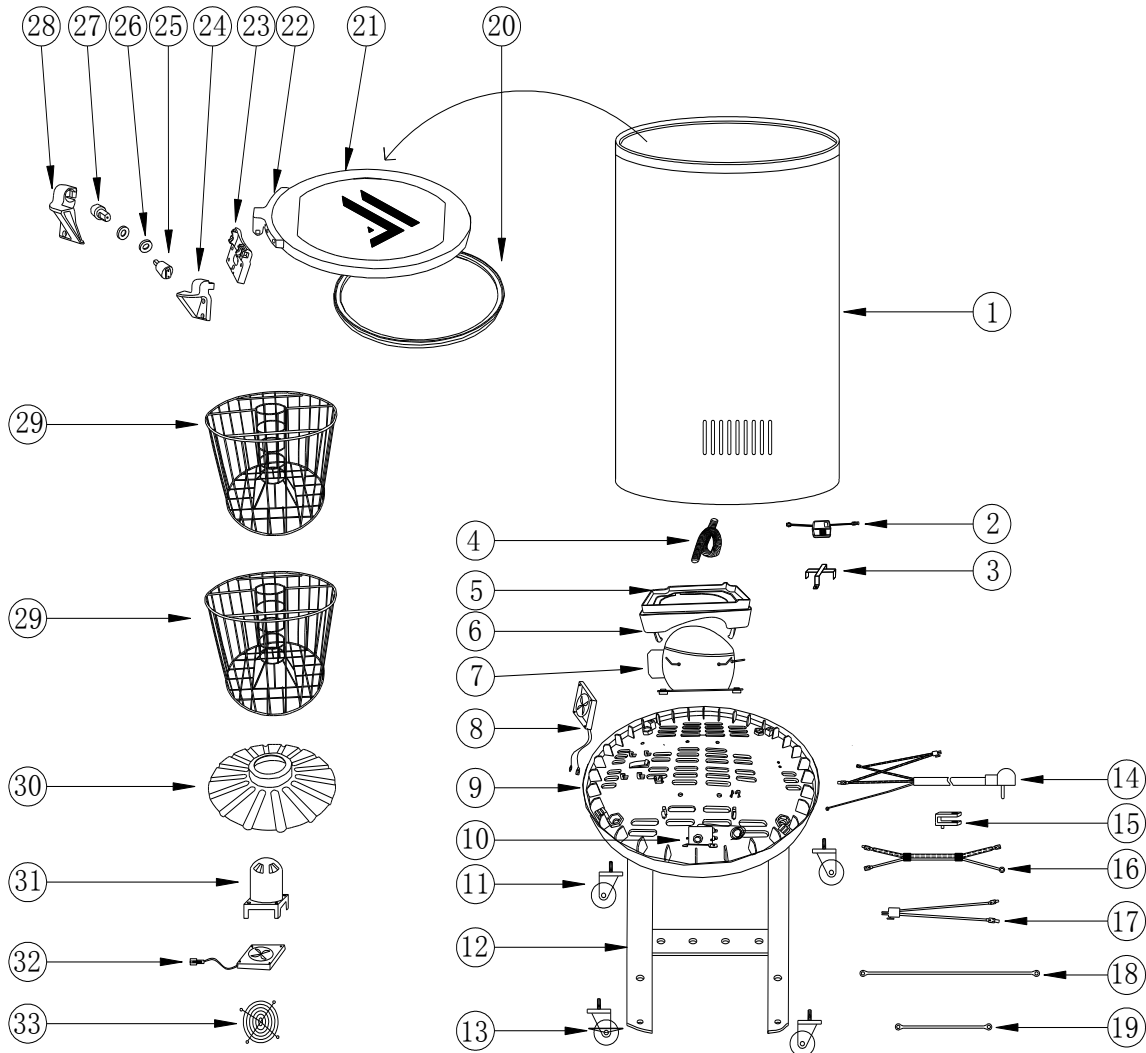


PARTS & IDENTIFICATION



- | | | |
|------------------------|---------------------------------|---------------------------|
| 1. Cooler Cabinet | 14. Caster with Lock | 25. Dampener (Right) |
| 2. Transformer (2) | 15. Power Cord | 26. Hinge Washer |
| 3. Transformer Box (2) | 16. Power Cord Clip | 27. Dampener (Left) |
| 4. Outlet Pipe | 17. Thermostat Wire | 28. Left Dampener Box |
| 5. Drip Pan Cover | 18. Transformer Connecting Line | 29. Basket (2) |
| 6. Drip Pan | 19. Grounded Line | 30. Evaporator Fan Baffle |
| 7. Compressor | 20. Fan Grounded Line | 31. Evaporator Fan Cover |
| 8. Compressor Fan | 21. Lid | 32. Evaporator Fan |
| 9. Compressor Base | 22. Hinge Connection | 33. Evaporator Fan Grill |
| 10. Thermostat | 23. Damp Base | |
| 11. Caster (3) | 24. Right Dampener Box | |
| 13. Base Supporter | | |